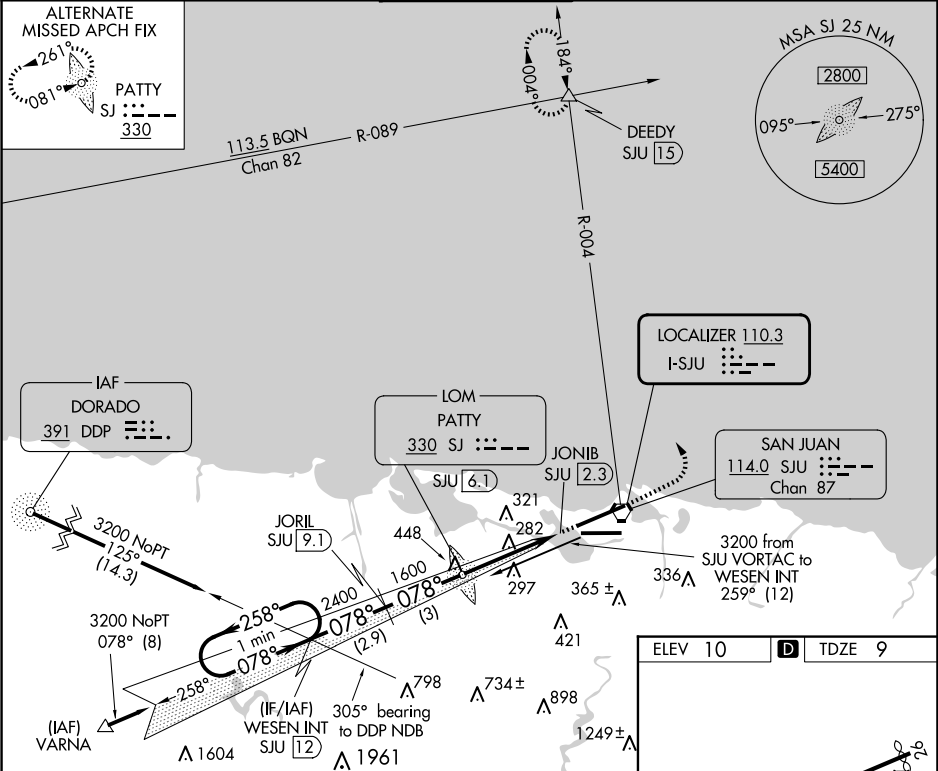


LOC I-SJU 110.3	APP CRS 078°	Rwy Ldg 9384 TDZE 9 Apt Elev 10
---------------------------	------------------------	--

ILS or LOC RWY 8

LUIS MUNOZ MARIN INTL (SJU)(TJSJ)

DME required. ▼ For inop ALS, increase S-ILS 8 all Cats visibility to 1 SM. ▲		MALSR AS	MISSED APPROACH: Climb to 2000 then climbing left turn to 3000 on heading 320° and SJU VORTAC R-004 to DEEDY Int/SJU 15 DME and hold.		
D-ATIS 125.8	SAN JUAN APP CON 119.4 269.2 (WEST & SW) 120.9 290.2 (NORTH & EAST)	SAN JUAN TOWER 132.05 257.8	GND CON 121.9 348.6	CLNC DEL 126.4 284.6	CPDLC



One Minute Holding Pattern

WESEN INT

SJU 12

JORIL

SJU 9.1

PATY LOM

1541

2000

3000

hdg 320°

SJU R-004

DEEDY

△

3200

←258°

078°→

078°

2400

1600

ILS unusable 0.8 NM from threshold inbound.

JONIB

SJU 2.3

GS 3.00°

TCH 46

VGSI and ILS glidepath not coincident (VGSI Angle 3.00/TCH 70).

2.9 NM

3 NM

3.8 NM

0.8

CATEGORY	A	B	C	D
S- ILS-8	311-½		302 (400-½)	
S- LOC-8	560-½	551 (600-½)	560-1 551 (600-1)	560-1¼ 551 (600-1¼)
CIRCLING	600-1	590 (600-1)	740-2 730 (800-2)	920-3 910 (1000-3)

