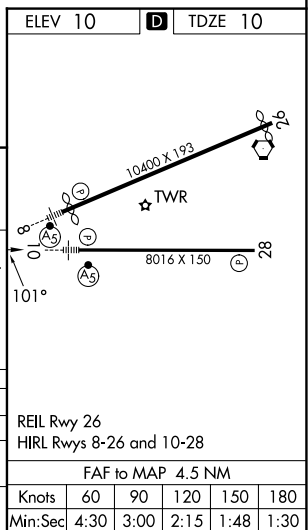


ILS or LOC RWY 10
LUIS MUNOZ MARIN INTL (SJU)(TJSJ)

- | | | | | | |
|-----------------|---|--------------------------------|------------------------|-------------------------|-------|
| D-ATIS
125.8 | SAN JUAN APP CON
119.4 269.2 (WEST & SW)
120.9 290.2 (NORTH & EAST) | SAN JUAN TOWER
132.05 257.8 | GND CON
121.9 348.6 | CLNC DEL
126.4 284.6 | CPDLC |
|-----------------|---|--------------------------------|------------------------|-------------------------|-------|



Cat E holding at REMSY NA.						* LOC only	1900 ↑	3000 hdg 300°	SJU R-004	DEEDY △
One Minute Holding Pattern						REMSY INT I-CLA [6]				
1700 ← 281° 101° →						1500	ZASPU INT I-CLA [3.2]	* I-CLA [2.6]	I-CLA [1.5]	Use I-CLA DME when on the localizer course.
GS 3.00° TCH 52						1500	* 600'			
						2.8 NM	0.6 NM	1.1 NM		
CATEGORY	A	B	C	D	E					
S-ILS 10	260-½					250 (300-½)				
S-LOC 10	420-½ 411 (500-½)					420-¾ 411 (500-¾)				
CIRCLING	600-1 590 (600-1)					740-2 730 (800-2)		920-3 910 (1000-3)		

SE-3 10 JUL 2025 to 07 AUG 2025