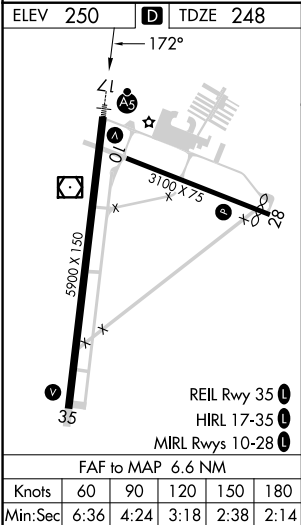
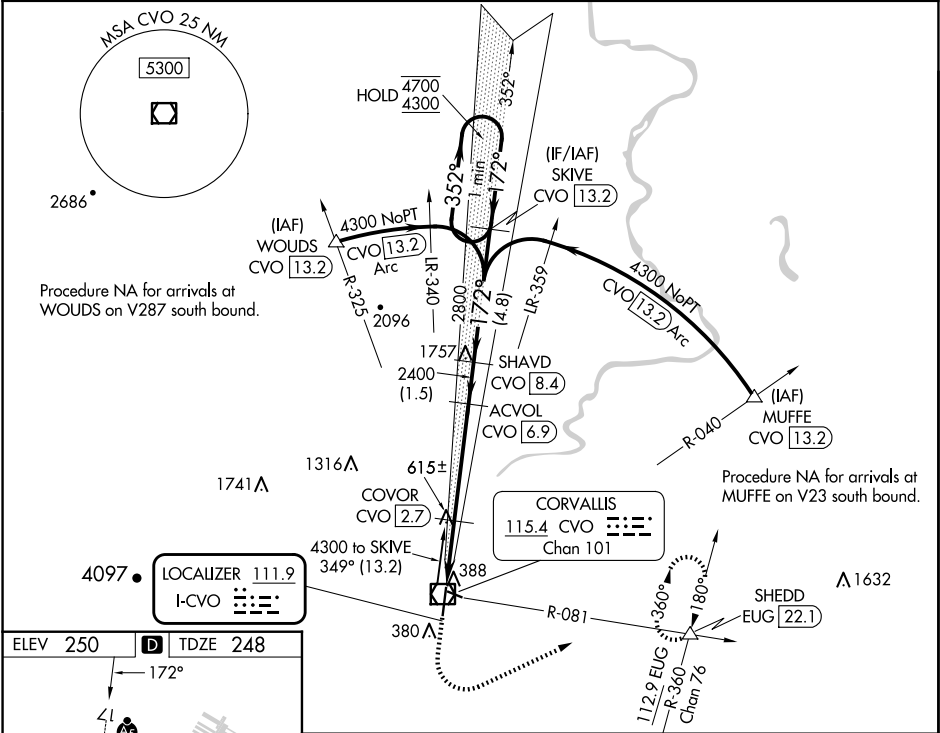


LOC I-CVO	APP CRS	Rwy Idg	5900
111.9	172°	TDZE	248
		Apt Elev	250

ILS or LOC RWY 17
CORVALLIS MUNI (CVO)

DME required.	MALSR	MISSED APPROACH: Climb to 900 then climbing left turn to 3000 on heading 050° and on CVO VOR/DME R-081 to SHEDD INT/EUG 22.1 DME and hold, continue climb-in-hold to 3000.
⚠ Circling Rwy 28 NA at night. For inop ALS, increase S-LOC 17 Cat C/D visibility to 1¾ SM. DME from CVO VOR/DME. DME use requires simultaneous reception of I-CVO and CVO DME.		

AWOS-3PT 135.775	CASCADE APP CON ★ 127.5 348.7	UNICOM 123.075 (CTAF) ①
---------------------	----------------------------------	----------------------------



900	3000	SHEDD	SKIVE	One Minute Holding Pattern
hdg 050°	CVO R-081	ACVOL CVO [6.9]	CVO [13.2]	
	COVOR CVO [2.7]	2400		
	CVO [2.1]	2800		
	CVO [0.3]	1060		
	1.8 NM	0.6	4.2 NM	1.5 NM
CATEGORY	A	B	C	D
S-ILS 17	448-½ 200 (200-½)			
S-LOC 17	880-½ 632 (700-½)		880-1⅜ 632 (700-1⅜)	
Ⓢ CIRCLING	880-1 630 (700-1)		920-1¾ 1060-2½ 670 (700-1¾) 810 (900-2½)	

NW-1, 10 JUL 2025 to 07 AUG 2025

NW-1, 10 JUL 2025 to 07 AUG 2025