
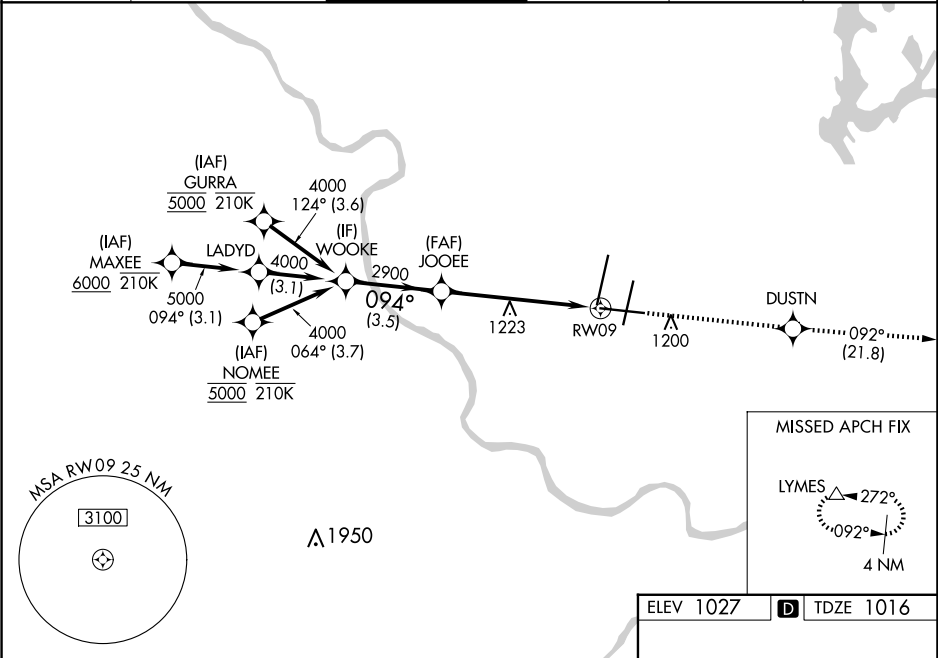


WAAS CH <b>56608</b> <b>W09A</b>	APP CRS <b>094°</b>	Rwy Idg TDZE <b>1016</b> Apt Elev <b>1027</b>	<b>9501</b>
--	------------------------	---	-------------

RNAV (GPS) Y RWY 9

KANSAS CITY INTL (MCI)

RNP APCH - GPS.			MALSR 	MISSED APPROACH: Climb to 4000 direct DUSTN and on track 092° to LYMES and hold.		
▼ For uncompensated Baro-VNAV systems, LNAV/VNAV NA below -19°C or above 54°C. For inop ALS, increase LPV all Cats and LNAV/VNAV all Cats visibility to RVR 4500, and increase LNAV Cats C/D visibility to 1½ SM.						
D-ATIS 128.375	KANSAS CITY APP CON 120.95 318.1	INTERNATIONAL TOWER 128.2 254.25	GND CON 121.8	CLNC DEL 135.7	CPDLC	



WOOKE		4000	DUSTN	tr 092°	LYMES
4000		2900	2900	1.3 NM to RW09	RW09
GP 3.00°		3.5 NM	4.5 NM	1.3 NM	
TCH 56					
CATEGORY	A	B	C	D	
LPV DA	1316/40 300 (300-¾)				
LNAV/VNAV DA	1319/40 303 (300-¾)				
LNAV MDA	1480/24 464 (500-½)	1480/50 464 (500-1)			
CIRCLING	1540-1 513 (600-1)	1540-1½ 513 (600-1½)	1580-2 553 (600-2)		

