
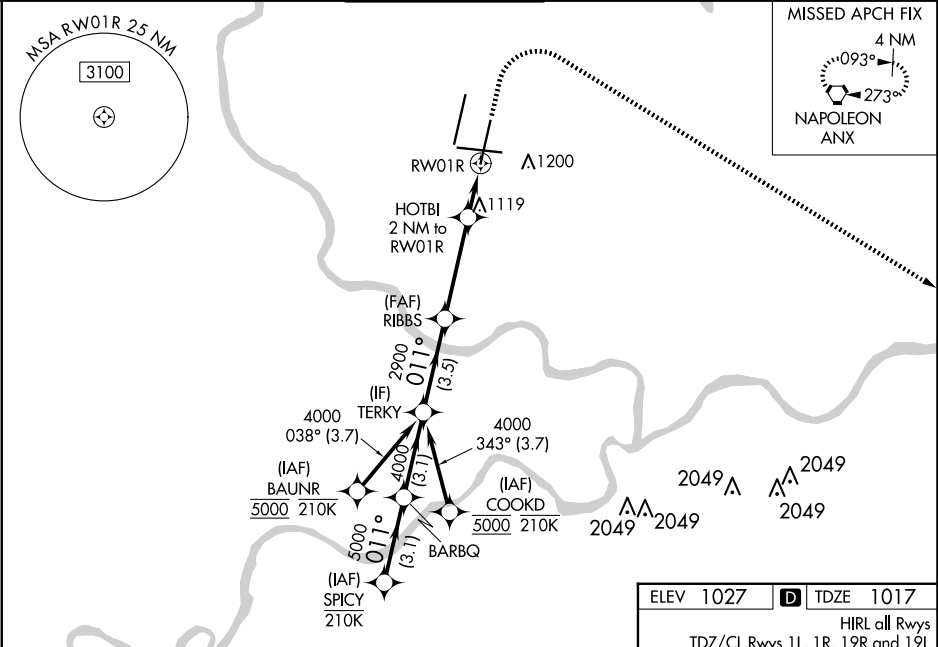


WAAS CH 58208 W01A	APP CRS 011°	Rwy Idg TDZE Apt Elev 9500 1017 1027
--	------------------------	--

RNAV (GPS) Y RWY 1R

KANSAS CITY INTL (MCI)

RNP APCH - GPS.		ALSF-2 	MISSED APPROACH: Climb to 1500 then climbing right turn to 4000 direct ANX VORTAC and hold.		
▼ LNAV procedure NA during simultaneous operations. Use of FD or AP required during simultaneous operations. For uncompensated Baro-VNAV systems, LNAV/VNAV NA below -19°C or above 54°C. Simultaneous approach authorized except from BAUNR or COOKD. For inop ALS, increase LNAV/VNAV all Cats visibility to RVR 4500 and LNAV Cats C/D visibility to RVR 5500.					
D-ATIS 128.375	KANSAS CITY APP CON 120.95 318.1	INTERNATIONAL TOWER 128.2 254.25	GND CON 121.8	CLNC DEL 135.7	CPDLC



SPICY		VGSI and RNAV glidepath not coincident (VGSI Angle 3.00/TCH 74).			1500	4000	ANX
BARBQ		TERKY	RIBBS	HOTBI 2 NM to RWY1R	0.9 NM to RWY1R	RWY1R	
6000	5000	4000	2900	1700			
GP 3.00° TCH 59							
3.1 NM		3.1 NM	3.5 NM	3.7 NM	1.1 NM	0.9 NM	
CATEGORY	A		B	C	D		
LPV DA	1217/18 200 (200-½)						
LNAV/ VNAV DA	1311/24 294 (300-½)						
LNAV MDA	1380/24 363 (400-½)			1380/35 363 (400-¾)			
CIRCLING	1540-1 513 (600-1)			1540-1½ 513 (600-1½)		1580-2 553 (600-2)	

