

WAAS CH 42808 W01B	APP CRS 011°	Rwy Idg 10801 TDZE 1014 Apt Elev 1027
--	------------------------	--

RNAV (GPS) Y RWY 1L

KANSAS CITY INTL (MCI)

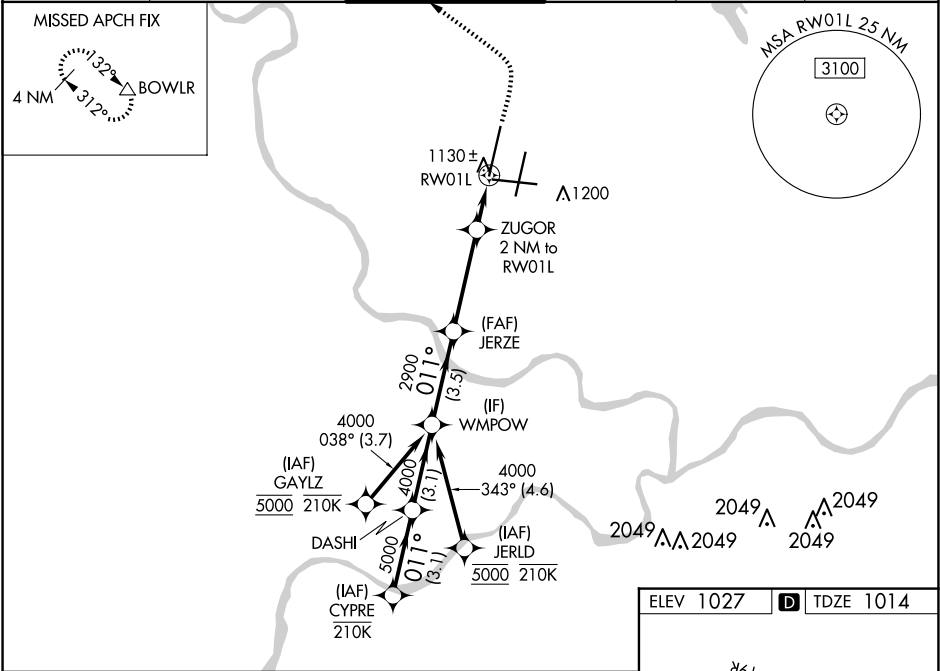
RNP APCH - GPS.

▼ Use of FD or AP required during simultaneous operations. LNAV procedure NA during simultaneous operations. For uncompensated Baro-VNAV systems, LNAV/VNAV NA below -19°C or above 54°C. For inop ALS, increase LNAV/VNAV all Cats visibility to RVR 4500 and LNAV Cats C/D visibility to RVR 5500. Simultaneous approach authorized except from GAYLZ and JERLD.

MALSR

MISSED APPROACH: Climb to 2000 then climbing left turn to 4000 direct BOWLR and hold.

D-ATIS 128.375	KANSAS CITY APP CON 120.95 318.1	INTERNATIONAL TOWER 128.2 254.25	GND CON 121.8	CLNC DEL 135.7	CPDLC
--------------------------	--	--	-------------------------	--------------------------	-------



CYPRE		VGSI and RNAV glidepath not coincident (VGSI Angle 3.00/TCH 78).		2000	4000	BOWLR
DASHI		WMPOW				
6000		011°				
5000		4000				
2900		1700				
GP 3.00°		TCH 57				
3.1 NM		3.1 NM				
3.5 NM		3.7 NM				
1.1 NM		0.9 NM				
CATEGORY	A	B	C	D		
LPV DA	1214/18		200 (200-½)			
LNAV/VNAV DA	1328/24		314 (400-½)			
LNAV MDA	1380/24		366 (400-½)			
CIRCLING	1540-1		513 (600-1)			
			1540-1½			
			513 (600-1½)			
			1580-2			
			553 (600-2)			

