

WAAS CH <b>82108</b> <b>W19A</b>	APP CRS <b>191°</b>	Rwy Idg <b>9500</b> TDZE <b>995</b> Apt Elev <b>1027</b>
--	------------------------	--

RNAV (GPS) Y RWY 19L

KANSAS CITY INTL (MCI)

RNP APCH - GPS.

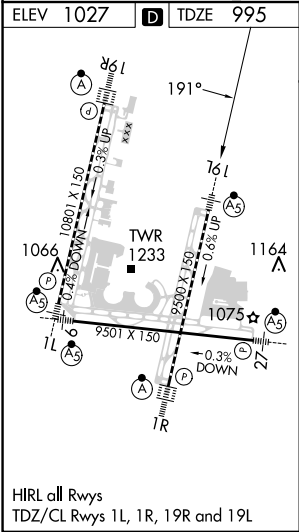
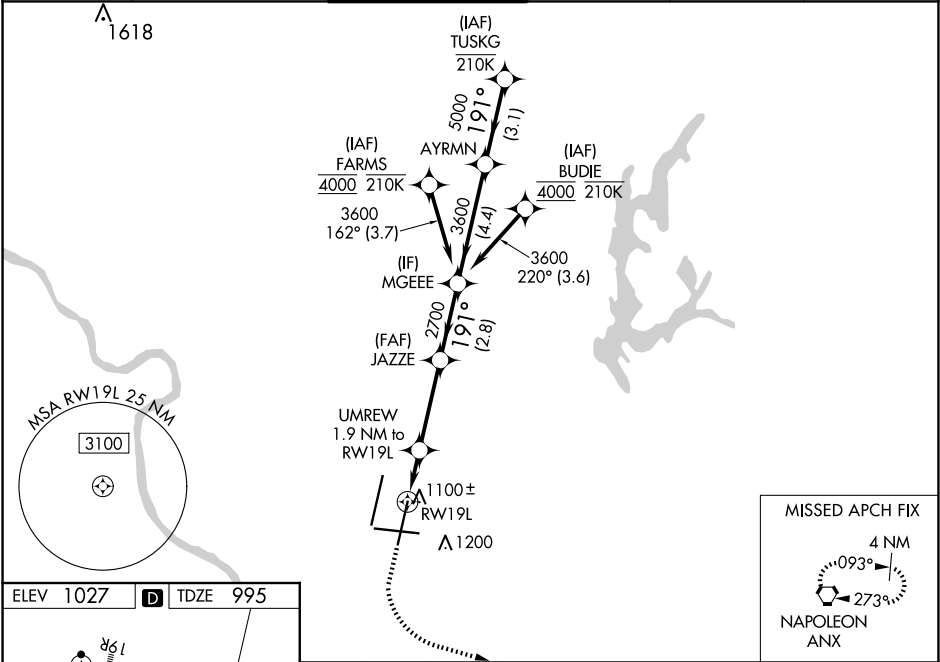
▼

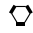

Use of FD or AP required during simultaneous operations. LNAV procedure NA during simultaneous operations. For uncompensated Baro-VNAV systems, LNAV/VNAV NA below -21°C or above 54°C. For inop ALS, increase LNAV/VNAV all Cats and LNAV Cats C/D visibility to RVR 5500. Simultaneous approach authorized except from BUDIE and FARMS.

MALSR

MISSED APPROACH: Climb to 1500 then climbing left turn to 4000 direct ANX VORTAC and hold.

D-ATIS <b>128.375</b>	KANSAS CITY APP CON <b>120.95 318.1</b>	INTERNATIONAL TOWER <b>128.2 254.25</b>	GND CON <b>121.8</b>	CLNC DEL <b>135.7</b>	CPDLC
--------------------------	--	--	-------------------------	--------------------------	-------



1500 ↑		4000 ↙		ANX 			
		RW19L 1 NM to RW19L ↓		UMREW 1.9 NM to RW19L		JAZZE 2700	
1 NM		0.9 NM		3.3 NM		2.8 NM	
1 NM		0.9 NM		3.3 NM		2.8 NM	
1 NM		0.9 NM		3.3 NM		2.8 NM	
1 NM		0.9 NM		3.3 NM		2.8 NM	
1 NM		0.9 NM		3.3 NM		2.8 NM	
1 NM		0.9 NM		3.3 NM		2.8 NM	
1 NM		0.9 NM		3.3 NM		2.8 NM	
1 NM		0.9 NM		3.3 NM		2.8 NM	
1 NM		0.9 NM		3.3 NM		2.8 NM	
1 NM		0.9 NM		3.3 NM		2.8 NM	
1 NM		0.9 NM		3.3 NM		2.8 NM	
1 NM		0.9 NM		3.3 NM		2.8 NM	
1 NM		0.9 NM		3.3 NM		2.8 NM	
1 NM		0.9 NM		3.3 NM		2.8 NM	
1 NM		0.9 NM		3.3 NM		2.8 NM	
1 NM		0.9 NM		3.3 NM		2.8 NM	
1 NM		0.9 NM		3.3 NM		2.8 NM	
1 NM		0.9 NM		3.3 NM		2.8 NM	
1 NM		0.9 NM		3.3 NM		2.8 NM	
1 NM		0.9 NM		3.3 NM		2.8 NM	
1 NM		0.9 NM		3.3 NM		2.8 NM	
1 NM		0.9 NM		3.3 NM		2.8 NM	
1 NM		0.9 NM		3.3 NM		2.8 NM	
1 NM		0.9 NM		3.3 NM		2.8 NM	
1 NM		0.9 NM		3.3 NM		2.8 NM	
1 NM		0.9 NM		3.3 NM		2.8 NM	
1 NM		0.9 NM		3.3 NM		2.8 NM	
1 NM		0.9 NM		3.3 NM		2.8 NM	
1 NM		0.9 NM		3.3 NM		2.8 NM	
1 NM		0.9 NM		3.3 NM		2.8 NM	
1 NM		0.9 NM		3.3 NM		2.8 NM	
1 NM		0.9 NM		3.3 NM		2.8 NM	
1 NM		0.9 NM		3.3 NM		2.8 NM	
1 NM		0.9 NM		3.3 NM		2.8 NM	
1 NM		0.9 NM		3.3 NM		2.8 NM	
1 NM		0.9 NM		3.3 NM		2.8 NM	
1 NM		0.9 NM		3.3 NM		2.8 NM	
1 NM		0.9 NM		3.3 NM		2.8 NM	
1 NM		0.9 NM		3.3 NM		2.8 NM	
1 NM		0.9 NM		3.3 NM		2.8 NM	
1 NM		0.9 NM		3.3 NM		2.8 NM	
1 NM		0.9 NM		3.3 NM		2.8 NM	
1 NM		0.9 NM		3.3 NM		2.8 NM	
1 NM		0.9 NM		3.3 NM		2.8 NM	
1 NM		0.9 NM		3.3 NM		2.8 NM	
1 NM		0.9 NM		3.3 NM		2.8 NM	
1 NM		0.9 NM		3.3 NM		2.8 NM	
1 NM		0.9 NM		3.3 NM		2.8 NM	
1 NM		0.9 NM		3.3 NM		2.8 NM	
1 NM		0.9 NM		3.3 NM		2.8 NM	
1 NM		0.9 NM		3.3 NM		2.8 NM	
1 NM		0.9 NM		3.3 NM		2.8 NM	
1 NM		0.9 NM		3.3 NM		2.8 NM	
1 NM		0.9 NM		3.3 NM		2.8 NM	
1 NM		0.9 NM		3.3 NM		2.8 NM	
1 NM		0.9 NM		3.3 NM		2.8 NM	
1 NM		0.9 NM		3.3 NM		2.8 NM	
1 NM		0.9 NM		3.3 NM		2.8 NM	
1 NM		0.9 NM		3.3 NM		2.8 NM	
1 NM		0.9 NM		3.3 NM		2.8 NM	
1 NM		0.9 NM		3.3 NM		2.8 NM	
1 NM		0.9 NM		3.3 NM		2.8 NM	
1 NM		0.9 NM		3.3 NM		2.8 NM	
1 NM		0.9 NM		3.3 NM		2.8 NM	
1 NM		0.9 NM		3.3 NM		2.8 NM	
1 NM		0.9 NM		3.3 NM		2.8 NM	
1 NM		0.9 NM		3.3 NM		2.8 NM	
1 NM		0.9 NM		3.3 NM		2.8 NM	
1 NM		0.9 NM		3.3 NM		2.8 NM	
1 NM		0.9 NM		3.3 NM		2.8 NM	
1 NM		0.9 NM		3.3 NM		2.8 NM	
1 NM		0.9 NM		3.3 NM		2.8 NM	
1 NM		0.9 NM		3.3 NM		2.8 NM	
1 NM		0.9 NM		3.3 NM		2.8 NM	
1 NM		0.9 NM		3.3 NM		2.8 NM	
1 NM		0.9 NM		3.3 NM		2.8 NM	
1 NM		0.9 NM		3.3 NM		2.8 NM	
1 NM		0.9 NM		3.3 NM		2.8 NM	
1 NM		0.9 NM		3.3 NM		2.8 NM	
1 NM		0.9 NM		3.3 NM		2.8 NM	
1 NM		0.9 NM		3.3 NM		2.8 NM	
1 NM		0.9 NM		3.3 NM		2.8 NM	
1 NM		0.9 NM		3.3 NM		2.8 NM	
1 NM		0.9 NM		3.3 NM		2.8 NM	
1 NM		0.9 NM		3.3 NM		2.8 NM	
1 NM		0.9 NM		3.3 NM		2.8 NM	
1 NM		0.9 NM		3.3 NM		2.8 NM	
1 NM		0.9 NM		3.3 NM		2.8 NM	
1 NM		0.9 NM		3.3 NM		2.8 NM	
1 NM		0.9 NM		3.3 NM		2.8 NM	
1 NM		0.9 NM		3.3 NM		2.8 NM	
1 NM		0.9 NM		3.3 NM		2.8 NM	
1 NM		0.9 NM		3.3 NM		2.8 NM	
1 NM		0.9 NM		3.3 NM		2.8 NM	
1 NM		0.9 NM		3.3 NM		2.8 NM	
1 NM		0.9 NM		3.3 NM		2.8 NM	
1 NM		0.9 NM		3.3 NM		2.8 NM	
1 NM		0.9 NM		3.3 NM		2.8 NM	
1 NM		0.9 NM		3.3 NM		2.8 NM	
1 NM		0.9 NM		3.3 NM		2.8 NM	
1 NM		0.9 NM		3.3 NM		2.8 NM	
1 NM		0.9 NM		3.3 NM		2.8 NM	
1 NM		0.9 NM		3.3 NM		2.8 NM	
1 NM		0.9 NM					