

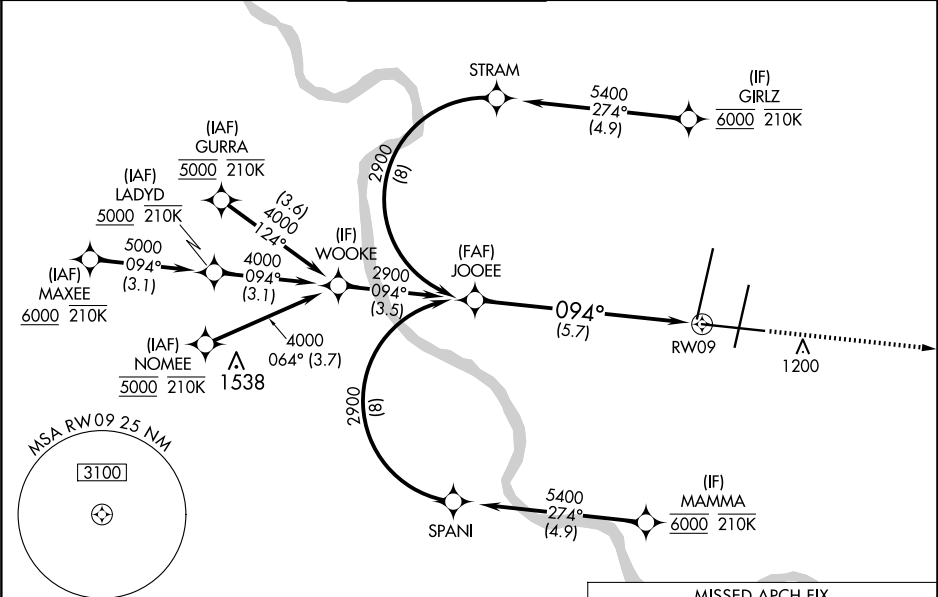
APP CRS	Rwy Idg	9501
094°	TDZE	1016
	Apt Elev	1027

RNAV (RNP) Z RWY 9

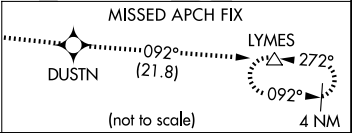
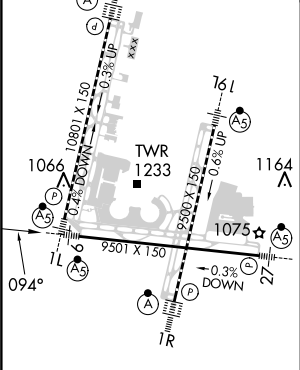
KANSAS CITY INTL (MCI)

RNP AR APCH - GPS.	MALSR	MISSED APPROACH: Climb to 4000 direct DUSTN and on track 092° LYMES and hold.
For uncompensated Baro-VNAV systems, procedure NA below -19°C or above 54°C. For inop ALS, increase RNP 0.20 all Cats visibility to RVR 4500; increase RNP 0.30 all Cats visibility to RVR 6000.		

D-ATIS 128.375	KANSAS CITY APP CON 120.95 318.1	INTERNATIONAL TOWER 128.2 254.25	GND CON 121.8	CLNC DEL 135.7	CPDLC
-------------------	-------------------------------------	-------------------------------------	------------------	-------------------	-------



ELEV 1027	D	TDZE 1016
-----------	---	-----------



JOOEE	2900	4000	DUSTN	tr 092°	LYMES
2900	094°	See planview for multiple IF locations.			
GP 3.00°	TCH 56	5.7 NM			
CATEGORY	A	B	C	D	
RNP 0.20 DA	1319/24 303 (300-½)				
RNP 0.30 DA	1418/40 402 (400-¾)				