

APP CRS 274°	Rwy Idg TDZE Apt Elev	9501 1027 1027
------------------------	-----------------------------	---

RNAV (RNP) Z RWY 27
KANSAS CITY INTL (MCI)

RADAR required for procedure entry. RNP AR APCH - GPS.

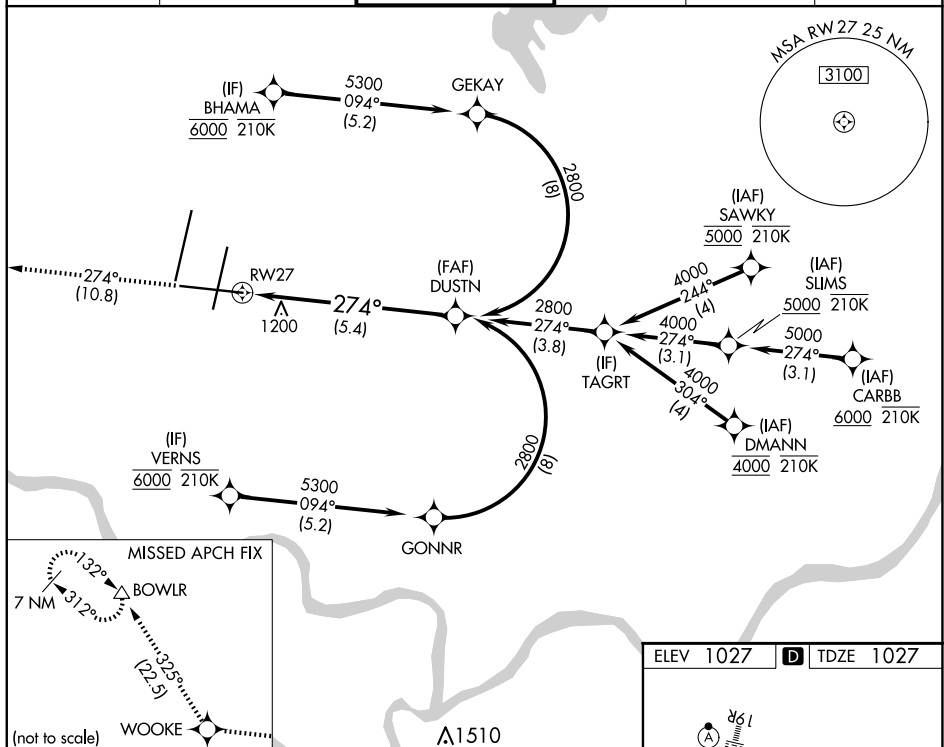
T For uncompensated Baro-VNAV systems, procedure NA below -19°C or above 54°C. For inop ALS, increase RNP 0.15 all Cats visibility to RVR 5500 and RNP 0.30 all Cats visibility to 1 3/4 SM.

MALSR



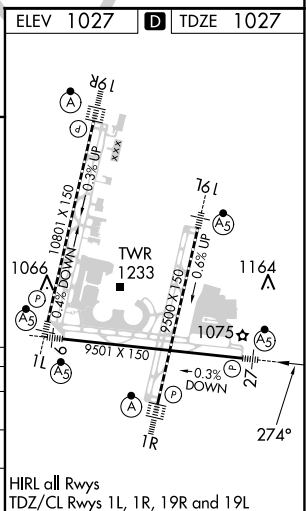
MISSED APPROACH: Climb to 4000 on track 274° to WOOKE and on track 325° to BOWLR and hold.

D-ATIS 128.375	KANSAS CITY APP CON 120.95 318.1	INTERNATIONAL TOWER 128.2 254.25	GND CON 121.8	CLNC DEL 135.7	CPDLC
--------------------------	--	--	-------------------------	--------------------------	-------



CATEGORY	A	B	C	D
RNP 0.15 DA		1371/30	344 (400-5%)	
RNP 0.30 DA		1506/50	479 (500-1)	

AUTHORIZATION REQUIRED



KANSAS CITY, MISSOURI

Amdt 2 14JUL22

39°18'N-94°43'W

KANSAS CITY INTL (MCT)

RNAV (RNP) Z RWY 27

NC-3, 10 JUL 2025 to 07 AUG 2025

NC-3, 10 JUL 2025 to 07 AUG 2025