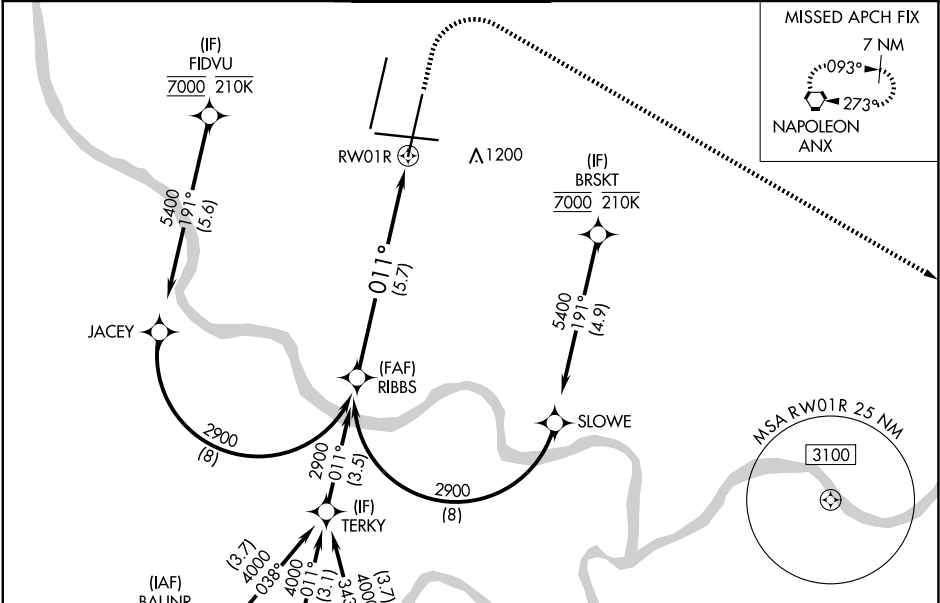


APP CRS	Rwy Idg	9500
011°	TDZE	1017
	Apt Elev	1027

RNAV (RNP) Z RWY 1R  
KANSAS CITY INTL (MCI)

RNP AR APCH - GPS.	ALSF-2 	MISSED APPROACH: Climb to 1500 then climbing right turn to 4000 direct ANX VORTAC and hold.
Use of FD or AP required during simultaneous operations. For uncompensated Baro-VNAV systems, procedure NA below -19°C or above 54°C. Simultaneous approach authorized, except for arrivals at FIDVU, BRSKT, BAUNR and COOKD. For inop ALS, increase RNP 0.30 all Cats visibility to RVR 4500.		

D-ATIS 128.375	KANSAS CITY APP CON 120.95 318.1	INTERNATIONAL TOWER 128.2 254.25	GND CON 121.8	CLNC DEL 135.7	CPDLC
-------------------	-------------------------------------	-------------------------------------	------------------	-------------------	-------



RIBBS VGSi and RNAV glidepath not coincident (VGSi Angle 3.00/TCH 74).				
2900				
GP 3.00° TCH 59				
See planview for multiple IF locations.				
5.7 NM				
1500	4000	ANX		
CATEGORY	A	B	C	D
RNP 0.30 DA	1280/24 263 (300-½)			
AUTHORIZATION REQUIRED				

