

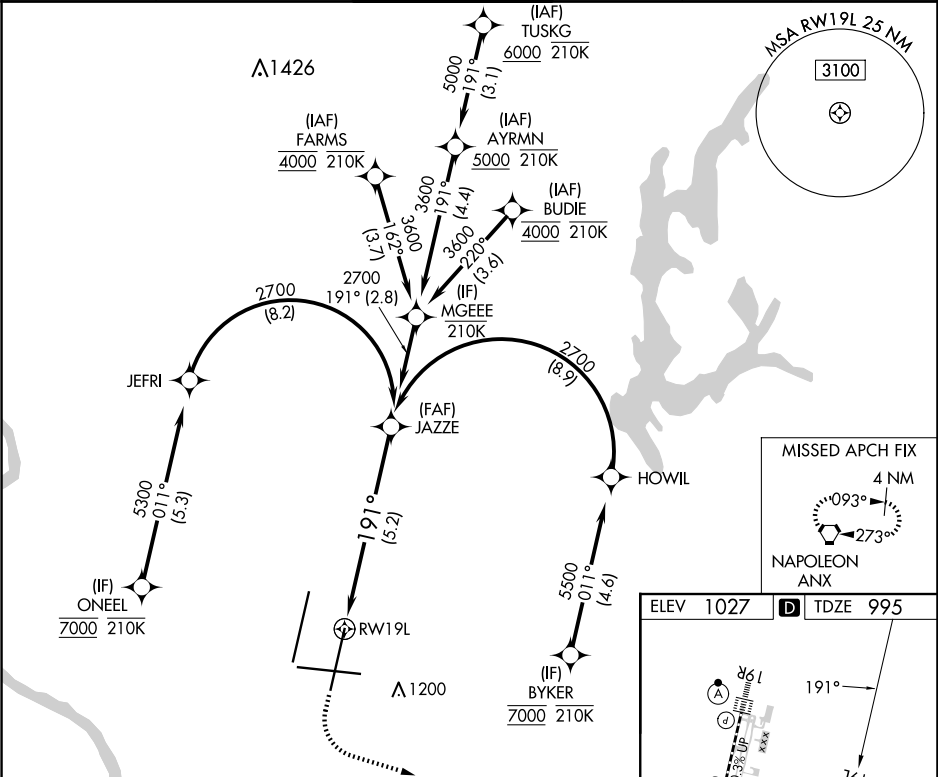
APP CRS	Rwy Idg	9500
191°	TDZE	995
	Apt Elev	1027



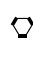
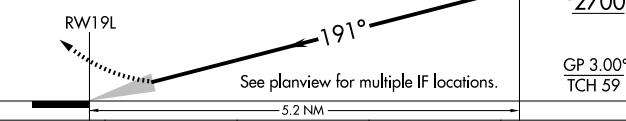
RNAV (RNP) Z RWY 19L

KANSAS CITY INTL (MCI)

RNP AR APCH - GPS.	MALSR 	MISSED APPROACH: Climb to 1500 then climbing left turn to 4000 direct ANX VORTAC and hold.
▼ Use of FD or AP required during simultaneous operations. For uncompensated Baro-VNAV systems, procedure NA below -21°C or above 54°C. Simultaneous approach authorized, except for arrivals at ONEEL, BYKER, FARMS and BUDIE. For inop ALS, increase RNP 0.20 all Cats visibility to RVR 4500 and RNP 0.30 all Cats visibility to RVR 5500.		

D-ATIS 128.375	KANSAS CITY APP CON 120.95 318.1	INTERNATIONAL TOWER 128.2 254.25	GND CON 121.8	CLNC DEL 135.7	CPDLC
-------------------	-------------------------------------	-------------------------------------	------------------	-------------------	-------



1500	4000	ANX				
						
						
CATEGORY	A	B	C	D		
RNP 0.20 DA	1310/24 315 (300-½)					
RNP 0.30 DA	1365/35 370 (400-¾)					
AUTHORIZATION REQUIRED						

