


LOC/DME I-RNI 109.7 Chan 34	APP CRS 094°	Rwy Idg TDZE Apt Elev	9501 1016 1027
---	------------------------	-----------------------------	---

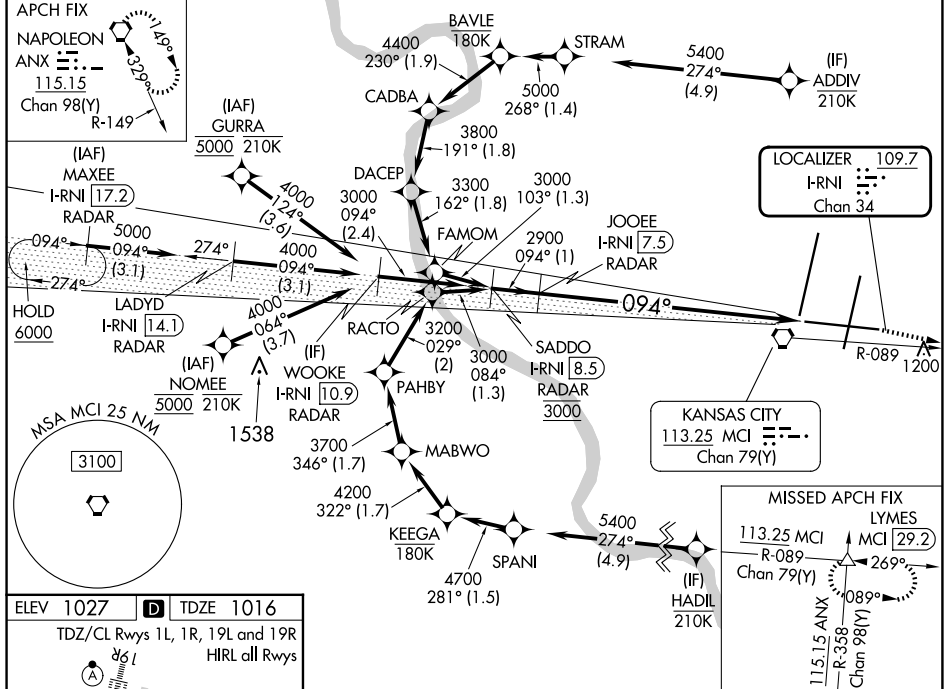
ILS or LOC RWY 9
KANSAS CITY INTL (MCI)

RNP APCH-GPS. From GURRA or NOME or ADDIV or HADIL.			MISSED APPROACH: Climb to 4000 on MCI R-089 to LYMES INT/MCI 29.2 DME and hold.		
DME or RADAR required. RADAR required for procedure entry at MAXEE.					
T Inop table does not apply to S-ILS 9. For inop ALS, increase S-LOC 9 Cats A/B visibility to RVR 5500 and S-LOC 9 Cat E visibility to 1 1/2 SM.					
D-ATIS 128.375	KANSAS CITY APP CON 120.95 318.1	INTERNATIONAL TOWER 128.2 254.25	GND CON 121.8	CLNC DEL 135.7	CPDLC

ALTERNATE MISSED
APCH FIX

NAPOLEON
ANX $\frac{115.15}{\text{Chan 98(Y)}}$

GURRA, NOME, ADDIV and HADIL transitions NA for Cat E.



ELEV 1027 **D** **TDZE 1016**

TDZ/CL Rwy's 1L, 1R, 19L and 19R
HIRL all Rwy's

Knots	60	90	120	150	180
Min:Sec	5:42	3:48	2:51	2:17	1:54

SADD0 I-RNI (8.5) RADAR	JOOEE I-RNI (7.5) RADAR	See planview for multiple IF locations.		
GS 3.00° TCH 56	3000 094° 2900	I-RNI (3)	I-RNI (1.7)	4000 MCI R-089 LYMES △
CATEGORY	A	B	C	E
S-ILS 9	1266/40 250 (300-¾)			
S-LOC 9	1460/40 444 (500-¾)	1460/45 444 (500-¾)		
CIRCLING	1540-1 513 (600-1)	1540-1½ 513 (600-1½)	1580-2 553 (600-2)	