

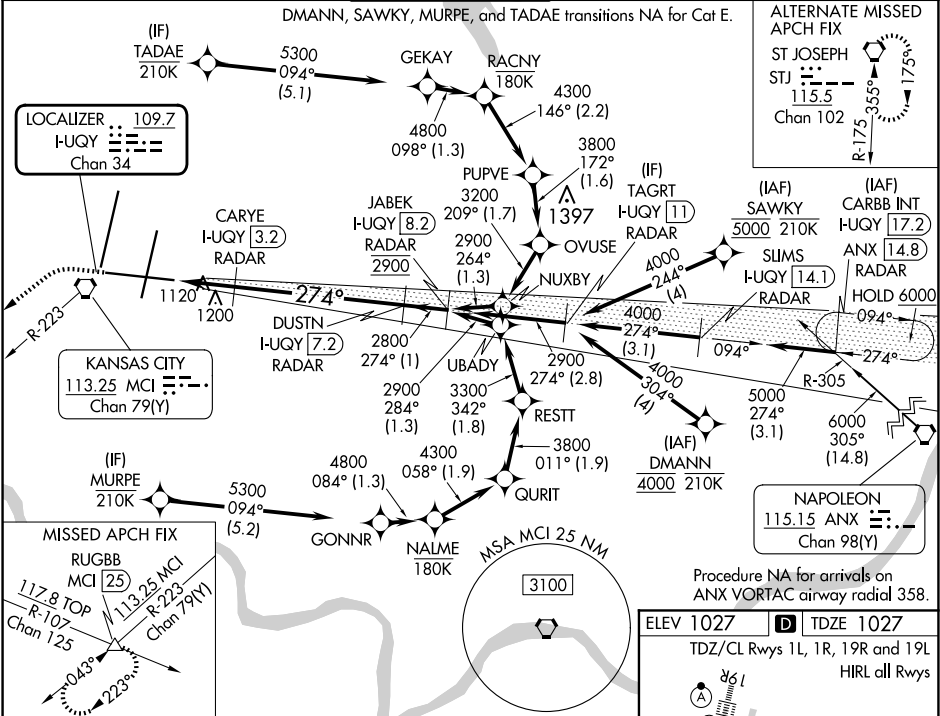
LOC/DME I-UYQY	APP CRS	Rwy Idg	9501
109.7	274°	TDZE	1027
Chan 34		Apt Elev	1027

ILS or LOC RWY 27

KANSAS CITY INTL (MCI)

RNP APCH - GPS. From DMANN or SAWKY or MURPE or TADAE. DME or RADAR required.	MALSR	MISSED APPROACH: Climb to 1600 then climbing left turn to 4000 on heading 230° and MCI R-223 to RUGBB INT/MCI 25 DME and hold.
For inop ALS, increase S-ILS 27 Cat E visibility to RVR 4000 and S-LOC 27 Cat C/D/E visibility to RVR 5500. *RVR 1800 authorized with use of FD or AP or HUD to DA.		

D-ATIS	KANSAS CITY APP CON	INTERNATIONAL TOWER	GND CON	CLNC DEL	CPDLC
128.375	120.95 318.1	128.2 254.25	121.8	135.7	



1600	4000	MCI	RUGBB	VGSI and ILS glidepath not coincident (VGSI Angle 3.00/TCH 72).	JABEK
hdg 230°	R-223				I-UYQY 8.2
See planview for multiple IF locations.					RADAR
					DUSTN
					I-UYQY 7.2
					RADAR
					2800
					274°
					2900
					2800
					GS 3.00°
					TCH 57
					0.9 NM
					0.6
					4 NM
					1 NM
CATEGORY	A	B	C	D	E
S-ILS 27*	1227/24 200 (200-½)				
S-LOC 27	1380/24	353 (400-½)	1380/30	353 (400-¾)	
CIRCLING	1540-1	513 (600-1)	1540-1½	513 (600-1½)	1580-2 553 (600-2)

