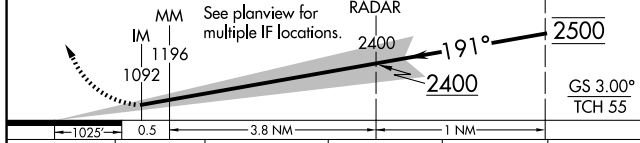
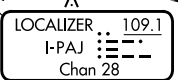


ILS RWY 19R (CAT II & III)
KANSAS CITY INTL (MCI)

MISSED APPROACH: Climb to 2000 then climbing right turn to 4000 on heading 240° and on MCI VORTAC R-223 to RUGBB INT/MCI 25 DME and hold.

CPDLC

A	B	C	D
CAT II RA 105/12 100 DA 1091			
CAT III RVR 07			

HIRL all Rwys
TDZ/CL Rwys 1L, 1R, 19L and 19R