

ITHACA, NEW YORK

AL-779 (FAA)

24249

WAAS CH <b>50415</b> <b>W14A</b>	APP CRS <b>144°</b>	Rwy Idg <b>6602</b> TDZE <b>1083</b> Apt Elev <b>1099</b>
--	------------------------	---

## RNAV (GPS) Z RWY 14

ITHACA TOMPKINS INTL (ITH)

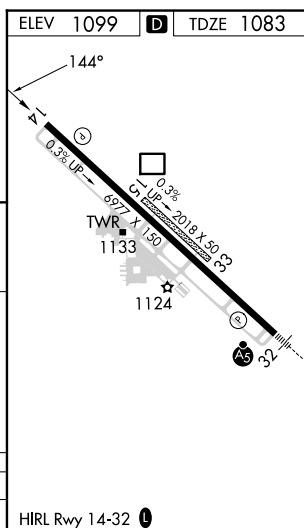
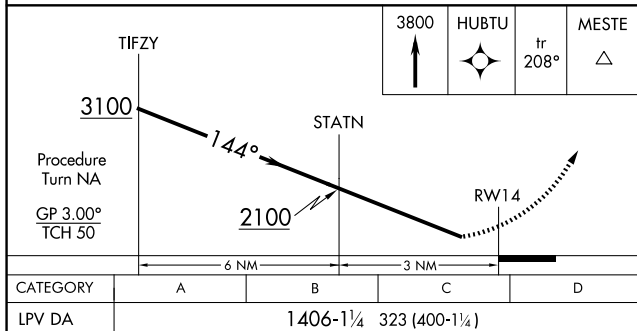
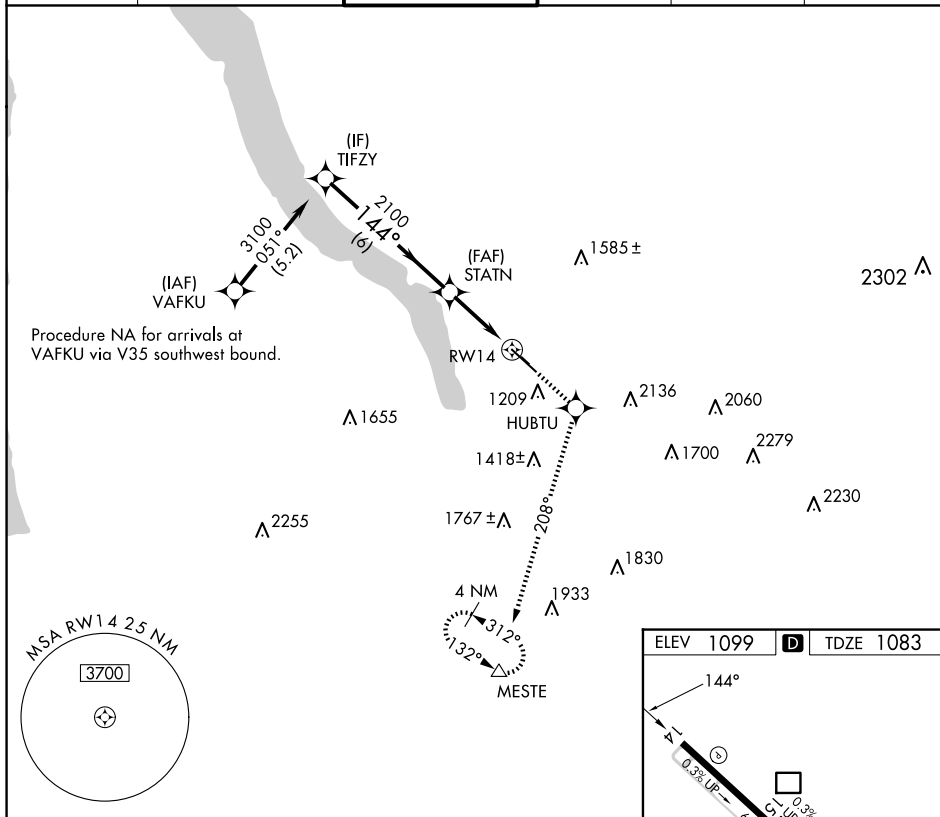


 -19°C

DME/DME RNP-0.3 NA. Visibility reduction by helicopters NA. When local altimeter setting not received, use Elmira altimeter setting and increase DA 84 feet and LPV all Cats visibility  $\frac{1}{4}$  mile.

**MISSED APPROACH:** Climb to 3800 direct HUBTU and via track 208° to MESTE and hold.

ATIS 125.175	ELMIRA APP CON ★ 124.3 257.8	Ithaca Tower ★ 119.6 (CTAF) 0	GND CON 121.8	CLNC DEL 121.8	UNICOM 122.95
-----------------	---------------------------------	----------------------------------	------------------	-------------------	------------------



ITHACA, NEW YORK

Orig-A 29JUL10

42°29'N - 76°28'W

ITHACA TOMPKINS INTL (ITH)

RNAV (GPS) Z RWY 14

NE-2, 10 JUL 2025 to 07 AUG 2025