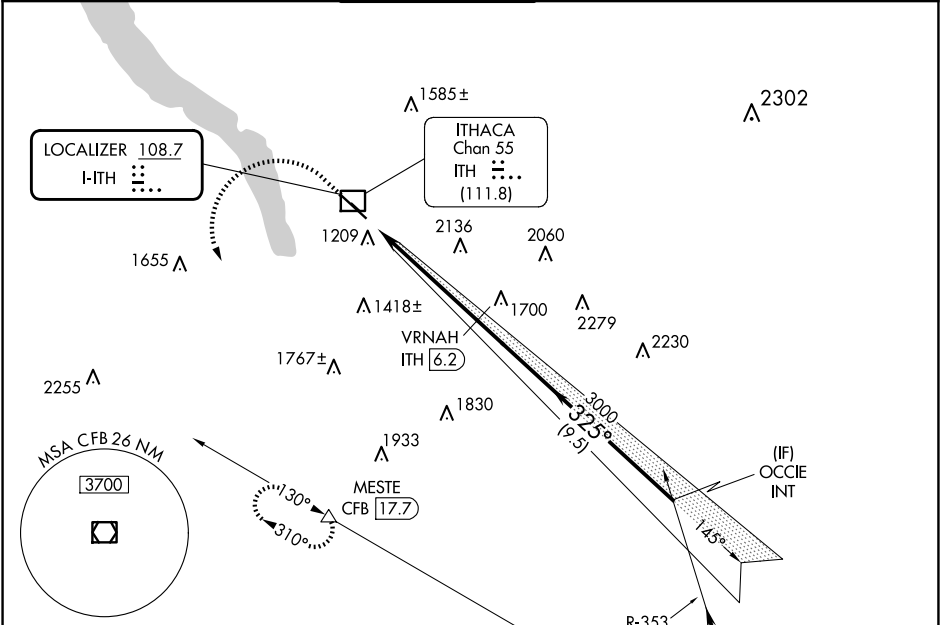


LOC I-ITH	APP CRS	Rwy Idg	6602
108.7	325°	TDZE	1099
		Apt Elev	1099

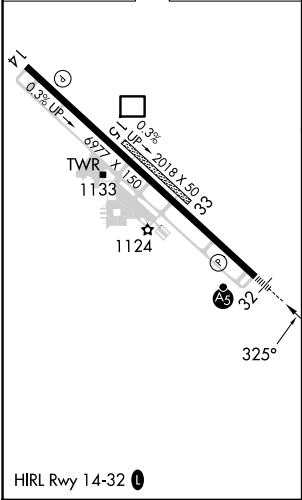
ILS or LOC RWY 32

ITHACA TOMPKINS INTL (ITH)

DME required.			<div>MALSR</div> <div><div><div>A5</div><div><div></div><div></div><div></div><div></div><div></div><div></div></div></div></div>	MISSED APPROACH: Climb to 2600 then climbing left turn to 4000 on heading 180° and CFB VOR/DME R-310 to MESTE/CFB VOR/DME 17.7 DME and hold.		
Circling NA to Rwy 15 and 33. DME from ITH DME. DME use requires simultaneous reception of I-ITH and ITH DME.						
-19°C						
ATIS	ELMIRA APP CON ★	ITHACA TOWER ★	GND CON	CLNC DEL	UNICOM	
125.175	124.3 257.8	119.6 (CTAF) 0	121.8	121.8	122.95	



ELEV 1099	D	TDZE 1099
-----------	---	-----------



IAF

BINGHAMTON

112.2 CFB

Chan 59

Procedure NA for arrival on CFB
VOR/DME airway radials 310 CW
015 and V374 northwest bound.

2600

4000

CFB R-310

MESTE

↑

hdg 180°

△

CATEGORY	A	B	C	D
S-ILS 32	1349/24 250 (300-½)			
S-LOC 32	2140/40 1041 (1100-¾)	2140/55 1041 (1100-1)	2140-2½	1041 (1100-2½)
CIRCLING	2140-1¼ 1041 (1100-1¼)	2140-1½ 1041 (1100-1½)	2140-3 1041 (1100-3)	2440-3 1341 (1400-3)