

WAAS CH 40217 W35A	APP CRS 355°	Rwy Ldg 13503 TDZE 1913 Apt Elev 1922
--	------------------------	--

RNAV (GPS) RWY 35L

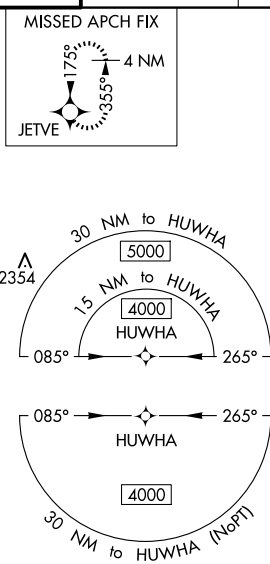
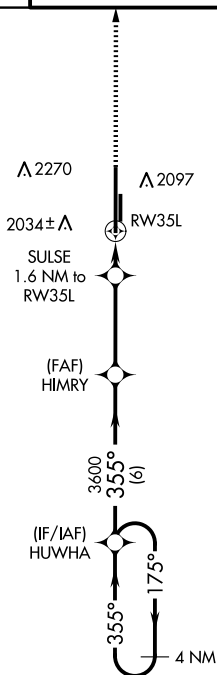
CLINTON/SHERMAN (CSM)

T For uncompensated Baro-VNAV systems, LNAV/VNAV NA below -12°C (11°F)
A or above 54°C (130°F). Circling NA east of Rwy 17R-35L. DME/DME RNP-0.3 NA.

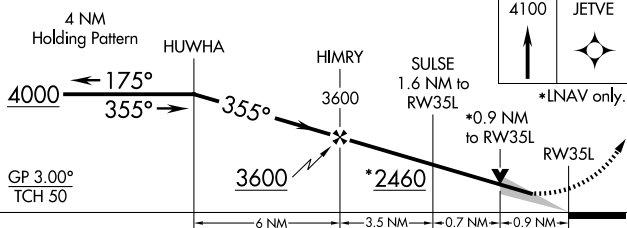
MISSED APPROACH: Climb to 4100 direct JETVE and hold.


ASOS 118.45	FORT WORTH CENTER 128.4 269.37	CLINTON/SHERMAN TOWER* 119.6 (CTAF) 0 256.9	GND CON 121.7 239.0	UNICOM 122.95
-----------------------	--	---	-------------------------------	-------------------------

Δ 2760



ELEV	1922		TDZE	1913
------	------	--	------	------



CATEGORY		A	B	C	D	E
LPV	DA	2113- $\frac{3}{4}$ 200 (200- $\frac{3}{4}$)				
LNAV/ VNAV	DA	2163- $\frac{3}{4}$ 250 (300- $\frac{3}{4}$)				
LNAV	MDA	2240-1 327 (400-1)				
 CIRCLING		2340-1 418 (500-1)	2380-1 458 (500-1)	2380-1 $\frac{1}{2}$ 458 (500-1 $\frac{1}{2}$)	2620-2 $\frac{1}{4}$ 698 (700-2 $\frac{1}{4}$)	2620-2 $\frac{1}{2}$ 698 (700-2 $\frac{1}{2}$)

