

BURNS FLAT, OKLAHOMA

AL-778 (FAA)

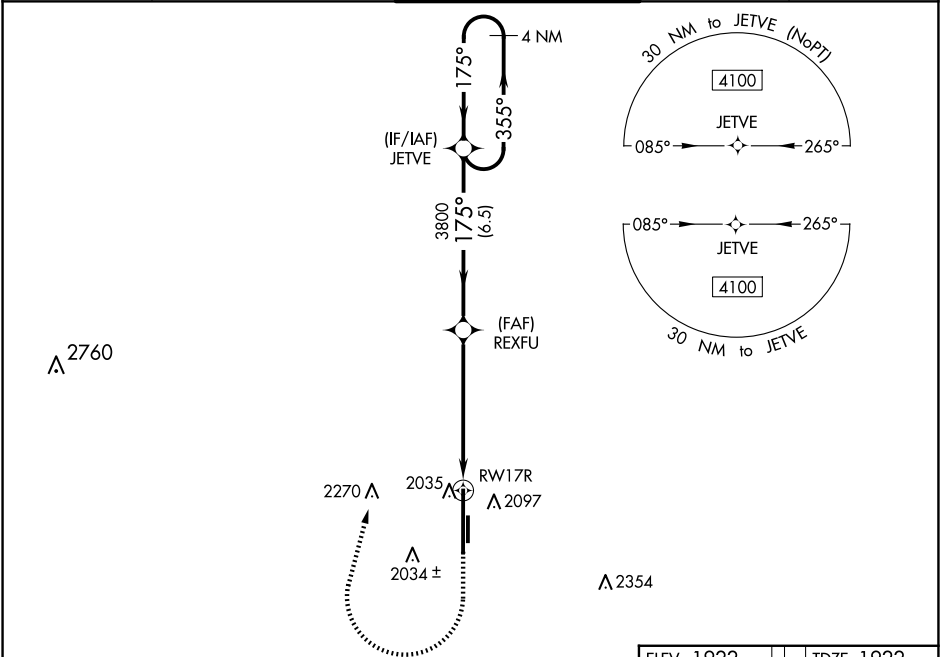
25163

WAAS CH 86717 W17A	APP CRS 175°	Rwy Ldg TDZE 13503 1922 Apt Elev 1922
--	------------------------	---

RNAV (GPS) RWY 17R
CLINTON/SHERMAN (CSM)

▼ For uncompensated Baro-VNAV systems, LNAV/VNAV NA below -12°C (11°F) ▲ or above 54°C (130°F). Circling NA east of Rwy 17R-35L. DME/DME RNP-0.3 NA.	MISSED APPROACH: Climb to 2500 then climbing right turn to 4100 direct JETVE and hold.
---	--

ASOS 118.45	FORT WORTH CENTER 128.4 269.37	CLINTON/SHERMAN TOWER★ 119.6 (CTAF) 0 256.9	GND CON 121.7 239.0	UNICOM 122.95
-----------------------	--	---	-------------------------------	-------------------------



ELEV 1922		TDZE 1922			
<div><div>2500 ↑</div><div>4100 ↷</div><div>JETVE ✱</div></div>		<div>← 175°</div> <div>↓ 35L</div> <div>✱ TWR</div> <div>13503 X 200</div> <div>5193 X 75</div> <div>35R</div> <div>35L</div>			
*LNAV only.		<div>JETVE</div> <div>4 NM Holding Pattern</div> <div>355° →</div> <div>← 175°</div> <div>4100</div> <div>3800</div> <div>175°</div> <div>3800</div> <div>GP 3.00°</div> <div>TCH 54</div> <div>1 NM</div> <div>4.7 NM</div> <div>6.5 NM</div> <div>RW17R</div> <div>*1 NM to RW17R</div> <div>REXFU</div> <div>3800</div>			
CATEGORY	A	B	C	D	E
LPV DA	2122-3/4 200 (200-3/4)				
LNAV/VNAV DA	2234-1 312 (400-1)				
LNAV MDA	2300-1 378 (400-1)				
CIRCLING	2340-1 418 (500-1)	2380-1 458 (500-1)	2380-1½ 458 (500-1½)	2620-2¼ 698 (700-2¼)	2620-2½ 698 (700-2½)
REIL Rwy 17R and 35L 0					HIRL Rwy 17R-35L 0

BURNS FLAT, OKLAHOMA

Amdt 1A 17AUG17

35°20'N-99°12'W

CLINTON/SHERMAN (CSM)
RNAV (GPS) RWY 17R

SC-1, 10 JUL 2025 to 07 AUG 2025