

25163

LOC I-BZF <u>109.5</u>	APP CRS 175°	Rwy Ldg TDZE Apt Elev	13503 1922 1922
----------------------------------	------------------------	-----------------------------	--

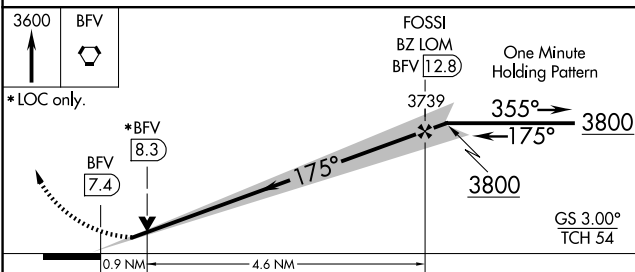
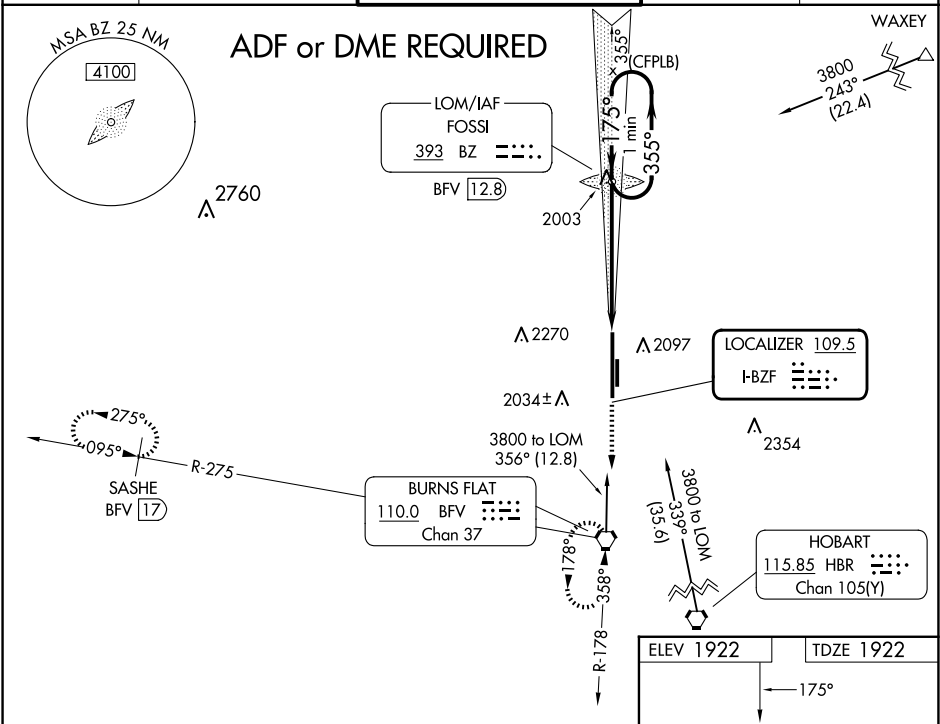
ILS or LOC RWY 17R
CLINTON/SHERMAN (CSM)

T
A

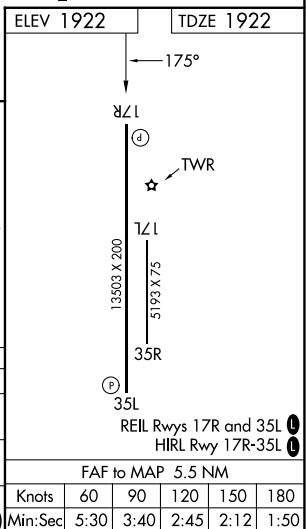
Circling NA east of Rwy 17R-35L.

MISSED APPROACH: Climb to 3600 direct BFV VORTAC and hold (TACAN aircraft climb to 3000 then climbing right turn to 5000 on heading 220° and on BFV VORTAC R-275 to SASHE/BFV 17 DME and hold west, left turn, 095° inbound.)

ASOS 118.45	FORT WORTH CENTER 128.4 269.37	CLINTON/SHERMAN TOWER* 119.6 (CTAF) 0 256.9	GND CON 121.7 239.0	UNICOM 122.95
----------------	-----------------------------------	--	------------------------	------------------



CATEGORY	A	B	C	D	E
S-ILS 17R	2122- ³ / ₄ 200 (200- ³ / ₄)				
S-LOC 17R	2260-1 338 (400-1)				
C CIRCLING	2340-1 418 (500-1)	2380-1 458 (500-1)	2380-1 ¹ / ₂ 458 (500-1 ¹ / ₂)	2620-2 ¹ / ₄ 698 (700-2 ¹ / ₄)	2620-2 ¹ / ₂ 698 (700-2 ¹ / ₂)



BURNS FLAT, OKLAHOMA
Amdt 8 27APR17

35°20'N-99°12'W

CLINTON/SHERMAN (CSM)

ILS or LOC RWY 17R

SC-1, 10 JUL 2025 to 07 AUG 2025