

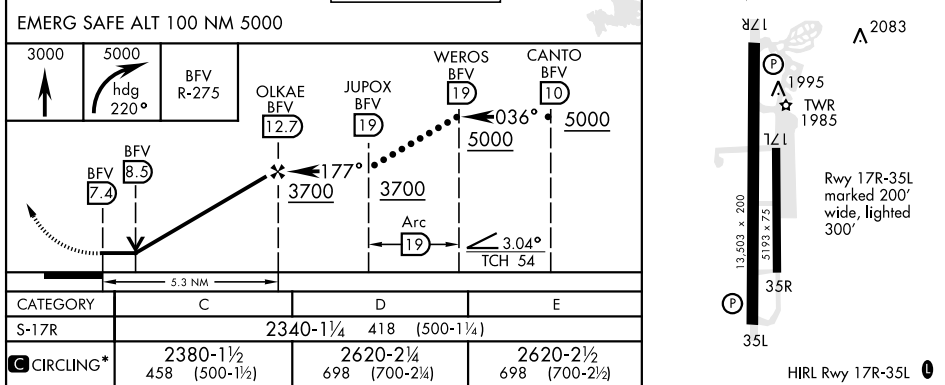
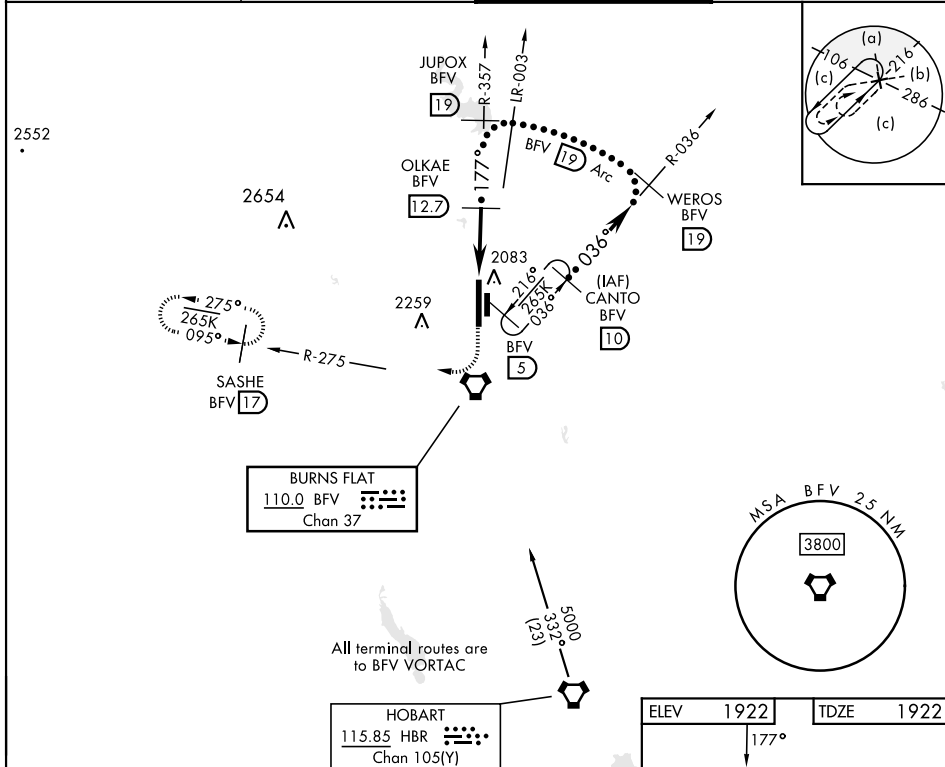
HI-VOR or TACAN RWY 17R

VORTAC BFV <b>110.0</b> Chan <b>37</b>	APCH CRS <b>177°</b>	Rwy Idg <b>13,503</b> TDZE <b>1922</b> Arpt Elev <b>1922</b>
--	-------------------------	--

[USAF]

CLINTON-SHERMAN (KCSM)

DME required		MISSED APPROACH: Climb to 3000 then climbing right turn to 5000 via heading 220° and BFV R-275 to SASHE/17 DME and hold.	
ASOS <b>118.45</b>	FORT WORTH CENTER <b>128.4 269.375</b>	TOWER ★ <b>119.6 (CTAF) 0 256.9</b>	GND CON <b>121.7 239.0</b>



HI-VOR or TACAN RWY 17R