

VORTAC LNY

117.7

Chan 124

APP CRS

098°

Rwy Idg

TDZE

Apt Elev

N/A

N/A

1308

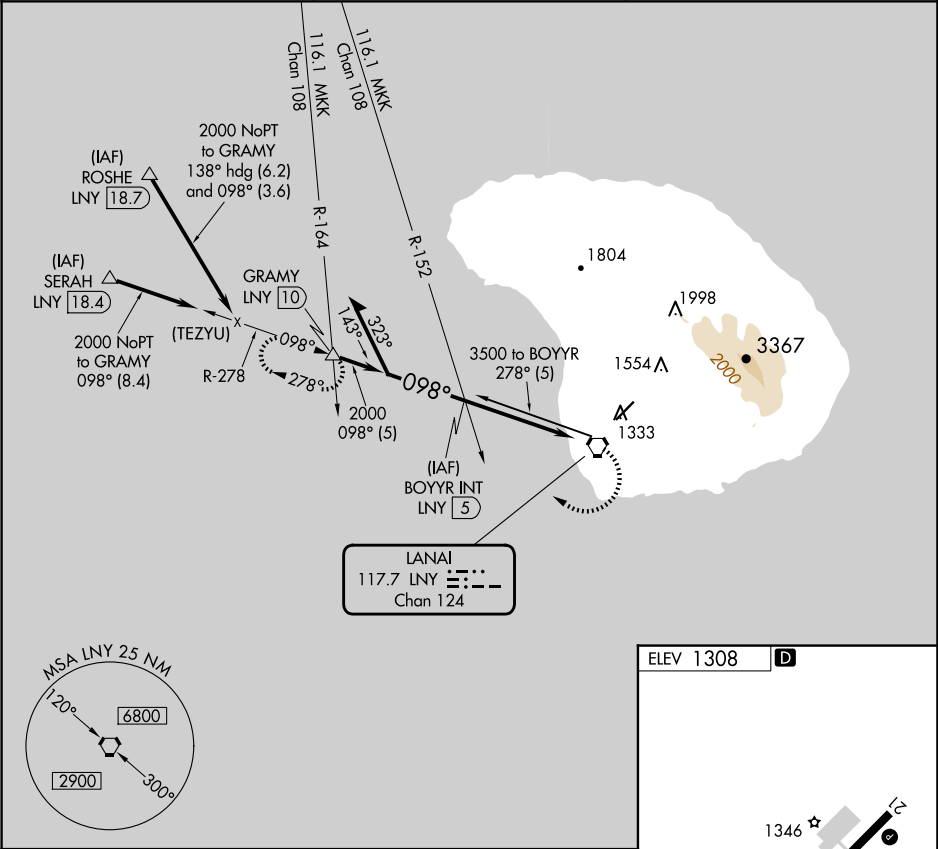
VOR or TACAN or GPS-A

LANAI (LNY)(PHNY)

When local altimeter not received, procedure not authorized, except for operators with approved weather reporting service. Circling Rwy 21 NA at night.

MISSED APPROACH: Climbing right turn to 2000 via LNY R-278 to GRAMY INT/LNY 10 DME and hold.

AWOS-3P 118.375	HCF CENTER 119.3 307.1	CTAF 122.9 0
--------------------	---------------------------	-----------------



Remain within 10 NM

BOYYR INT LNY 5

2000

278°

098°

2000

5 NM

LANAI VORTAC

2000

GRAMY

LNY R-278

ELEV 1308

D

1346

5000 X 150

CATEGORY	A	B	C	D
CIRCLING	1840-1½ 532 (600-1½)	1900-1½ 592 (600-1½)	NA	NA

MIRL Rwy 3-21 0