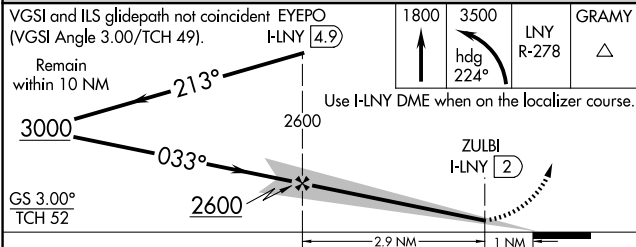
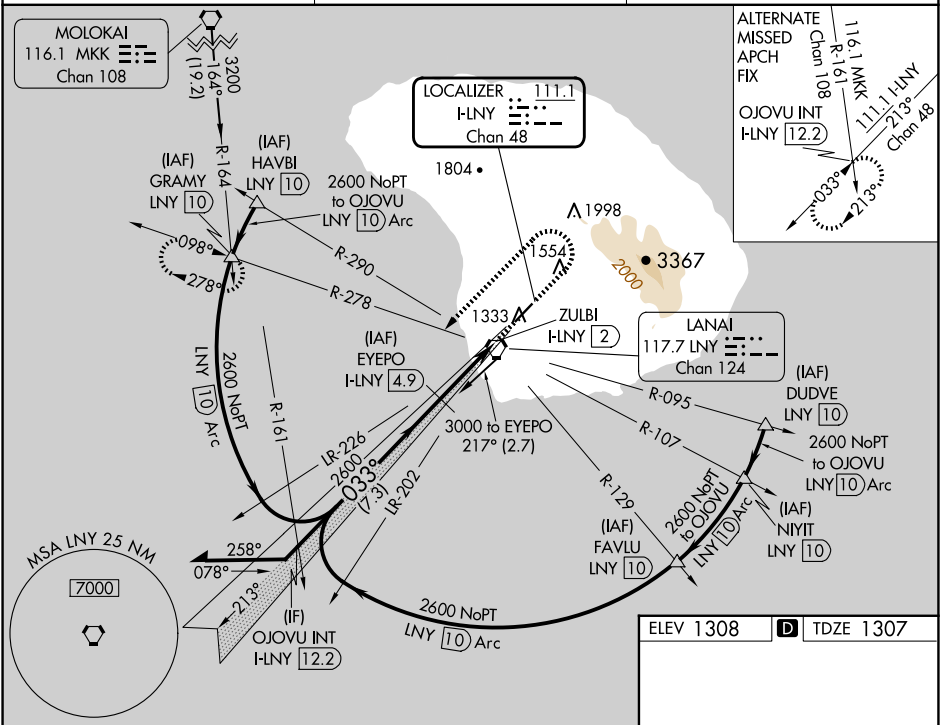


LOC/DME	I-LNY	APP CRS	Rwy Idg	5000
111.1		033°	TDZE	1307
Chan 48			Apt Elev	1308

ILS or LOC RWY 3  
LANAI (LNY)(PHNY)

DME required.	MISSED APPROACH: Climb to 1800 then climbing left turn to 3500 on heading 224° and LNY VORTAC R-278 to GRAMY INT/LNY VORTAC 10 DME and hold.
NA Circling Rwy 21 NA at night. Autopilot coupled approach NA below 1505. When local altimeter setting not received, procedure NA, except for operators with approved weather reporting service. Circling NA for Cat C southeast of Rwy 3-21.	

AWOS-3P 118.375	HCF CENTER 119.3 307.1	CTAF 122.9 0
--------------------	---------------------------	-----------------



CATEGORY	A	B	C	D
S-ILS 3		1588-1	281 (300-1)	
S-LOC 3		1580-1¼	273 (300-1¼)	
CIRCLING	1900-1¼ 592 (600-1¼)	1940-1¼ 632 (700-1¼)	2140-2½ 832 (900-2½)	NA

