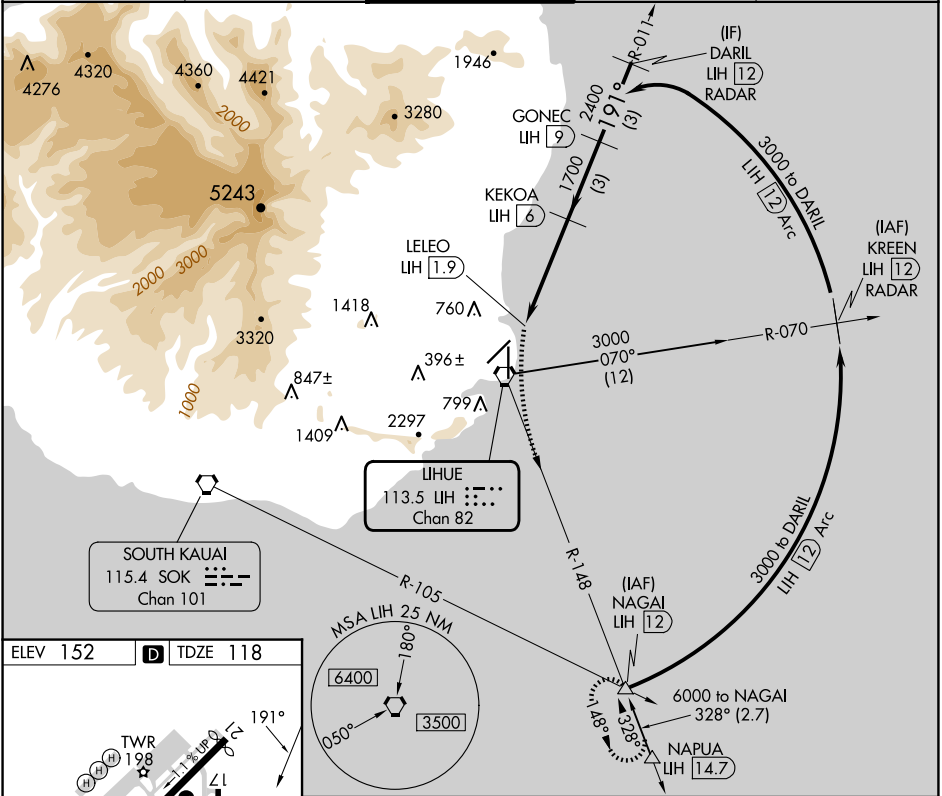


VORTAC UH	APP CRS	Rwy Idg	6295
113.5	191°	TDZE	118
Chan 82		Apt Elev	152

VOR or TACAN RWY 21
LIHUE (LIH)(PHLI)

DME required.	MISSED APPROACH: Climb to 600 then climbing left turn to 3000 on heading 152° and UH VORTAC R-148 to NAGAI/12 DME and hold.
⚠ Circling NA at night. Circling NA west of Rwy 17-35. Rwy 21 helicopter visibility reduction below ¾ SM NA.	

ATIS 127.2	HCF CENTER 126.5 269.4	LIHUE TOWER★ 118.9(CTAF) 0 263.1	GND CON 121.9	CLNC DEL 126.5 269.4 (When twr closed)
---------------	---------------------------	-------------------------------------	------------------	--



ELEV 152	TDZE 118	VGSIs and descent angles not coincident (VGSi Angle 3.00/TCH 45).			
HIRL Rwy 17-35 REIL Rwy 3, 17 and 21 MIRL Rwy 3-21		CATEGORY			
FAF to MAP 4.1 NM		S-21			
Knots 60 90 120 150 180 Min:Sec 4:06 2:44 2:03 1:38 1:22		520-1 402 (400-1) 520-1½ 402 (400-1½)			
CIRCLING		520-1 368 (400-1) 620-1 468 (500-1) 620-1½ 468 (500-1½) 720-2 568 (600-2)			

VOR or TACAN RWY 21
LIHUE (LIH)(PHLI)