

APP CRS	Rwy Idg	6500
349°	TDZE	96
	Apt Elev	153

RNAV (GPS) Y RWY 35

LIHUE (LIH)(PHLI)

▼

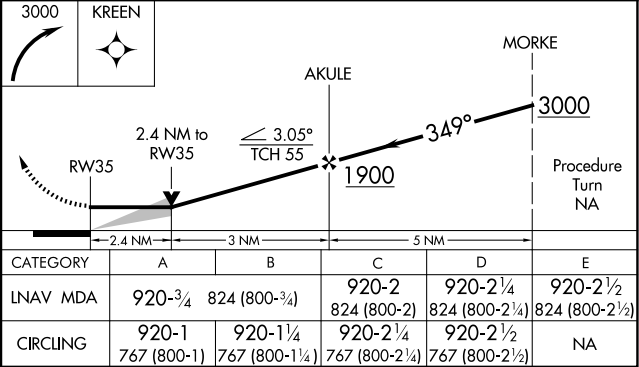
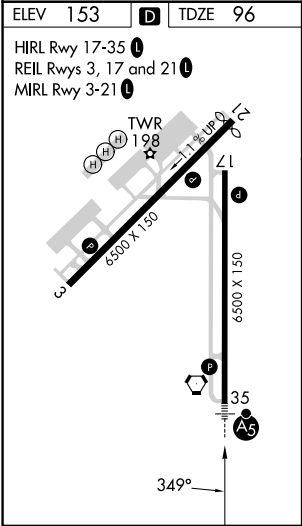
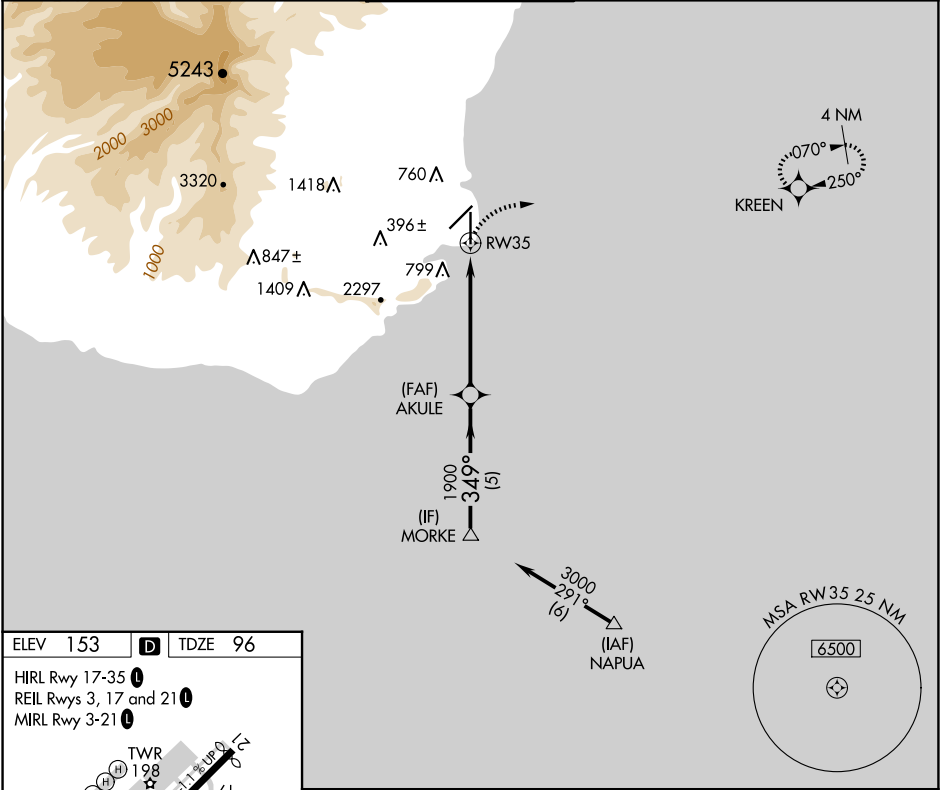
▲

For inoperative MALSR, increase LNAV Cat A visibility to 1 mile and Cat E to 3 miles. Circling NA at night. DME/DME RNP-0.3 NA.

MALSR

MISSED APPROACH: Climbing right turn to 3000 direct KREEN WP and hold.

ATIS 127.2	HCF CENTER 126.5 269.4	LIHUE TOWER★ 118.9(CTAF) 0 263.1	GND CON 121.9	CLNC DEL 126.5 269.4 (When twr closed)
---------------	---------------------------	-------------------------------------	------------------	----------------------------------------------



PAC, 12 JUN 2025 to 07 AUG 2025

PAC, 12 JUN 2025 to 07 AUG 2025