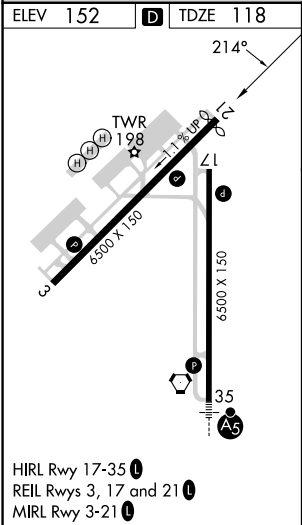
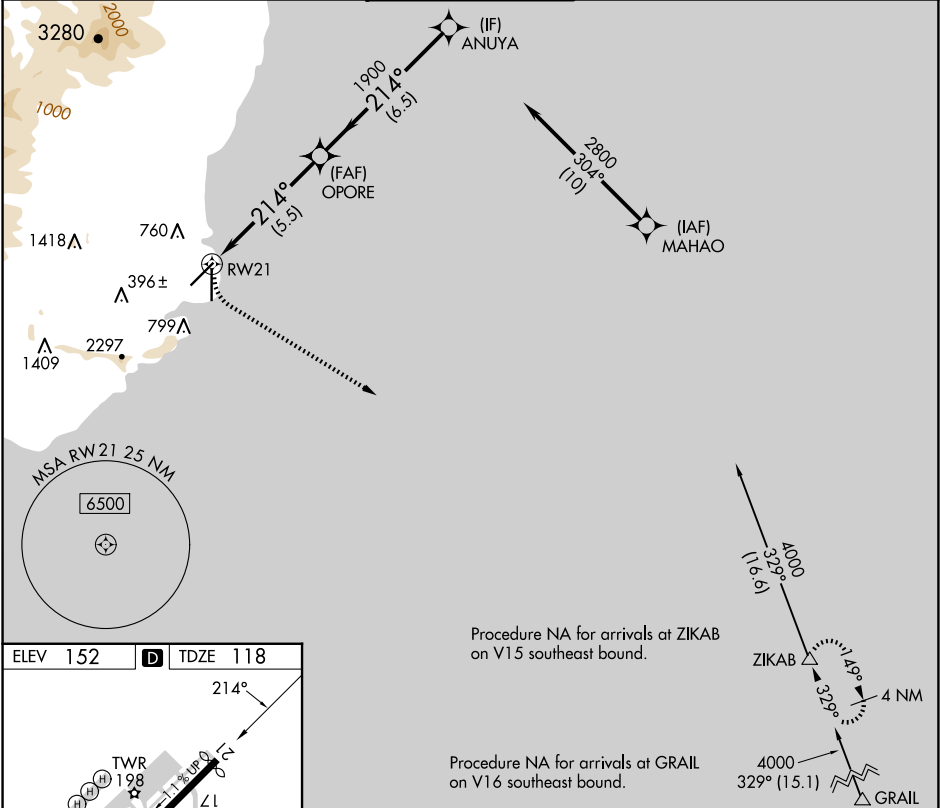
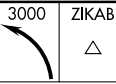
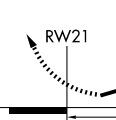
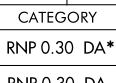
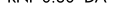



APP CRS	Rwy Idg	6295
214°	TDZE	118
	Apt Elev	152

RNAV (RNP) Z RWY 21
LIHUE (LIH)(PHLI)

RNP AR APCH-GPS.		MISSED APPROACH: Climbing left turn to 3000 direct ZIKAB and hold. *Missed approach requires minimum climb of 350 feet per NM to 2500.	
▼ For uncompensated Baro-VNAV systems, procedure NA below 15°C or above 54°C.			
ATIS 127.2	HCF CENTER 126.5 269.4	LIHUE TOWER★ 118.9(CTAF) 263.1	GND CON 121.9
		CLNC DEL 126.5 269.4 (When twr closed)	



		VGSi and RNAV glidepath not coincident (VGSi Angle 3.00/TCH 45).		
		ANUYA 2800		
		GP 3.00° TCH 52		
				
CATEGORY	A	B	C	D
RNP 0.30 DA*	663-2 545 (600-2)			
RNP 0.30 DA	1078-4 960 (1000-4)			
AUTHORIZATION REQUIRED				

PAC, 12 JUN 2025 to 07 AUG 2025

PAC, 12 JUN 2025 to 07 AUG 2025