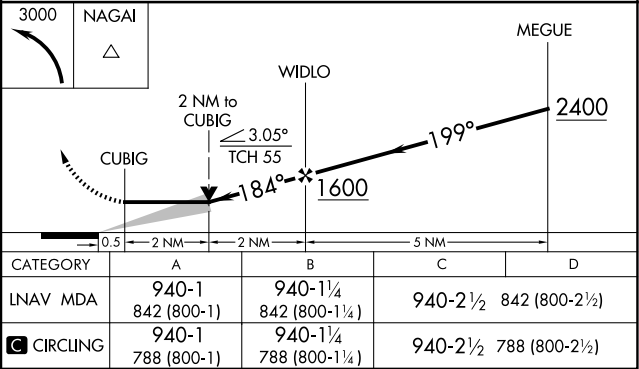
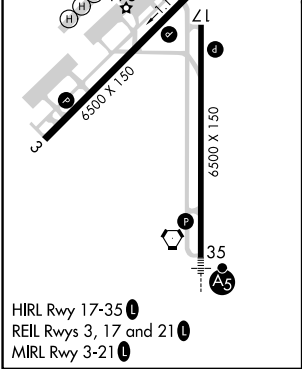
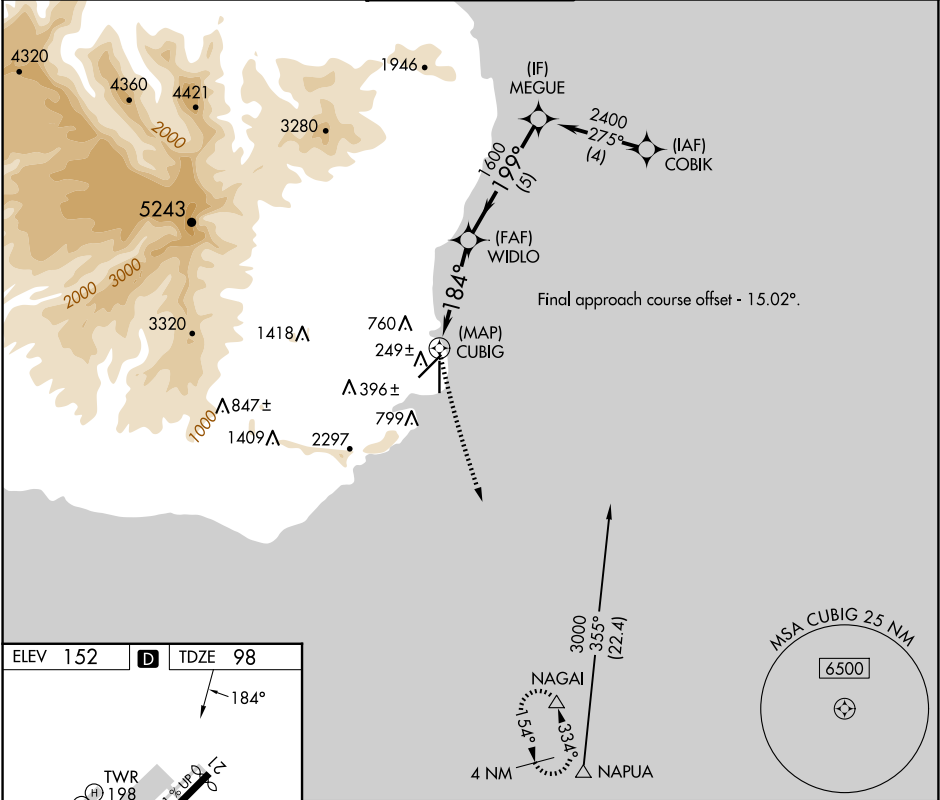


APP CRS	Rwy Idg	6500
184°	TDZE	98
	Apt Elev	152

RNAV (GPS) RWY 17
LIHUE (LIH)(PHLI)

RNP APCH-GPS.		MISSED APPROACH: Climbing left turn to 3000 direct NAGAI and hold.		
Circling NA at night. Circling NA west of Rwy 17-35.				
ATIS 127.2	HCF CENTER 126.5 269.4	LIHUE TOWER ★ 118.9(CTAF) 0 263.1	GND CON 121.9	CLNC DEL 126.5 269.4 (When twr closed)



PAC, 12 JUN 2025 to 07 AUG 2025

PAC, 12 JUN 2025 to 07 AUG 2025