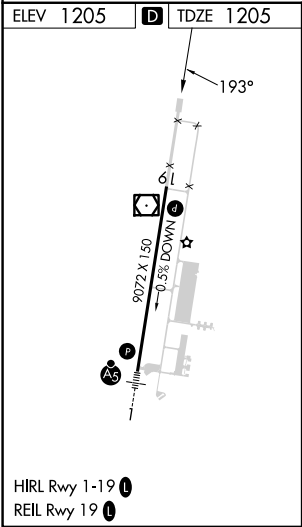
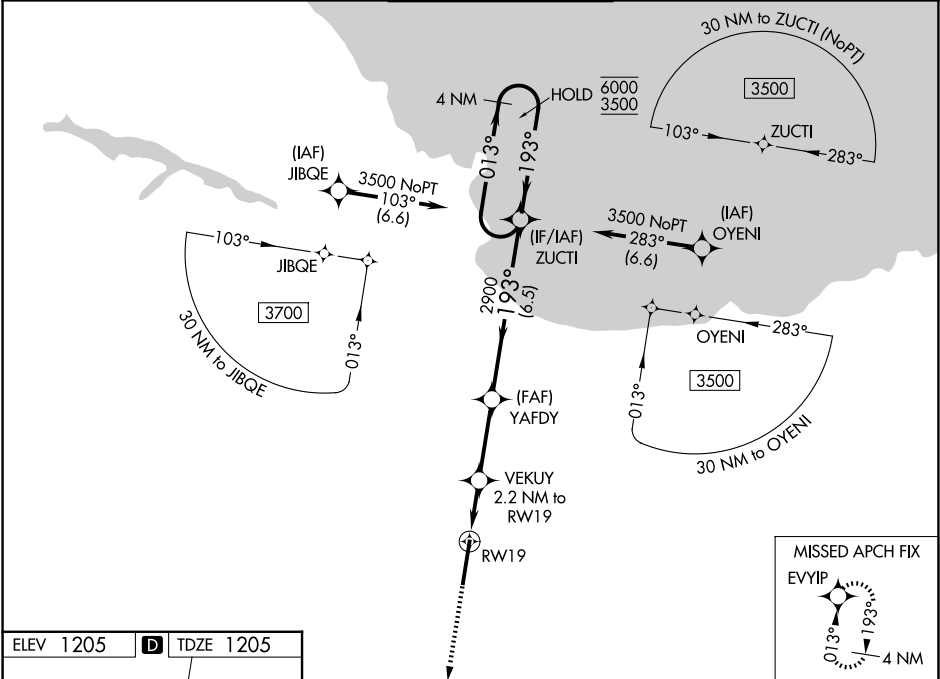


WAAS CH 86616 W19A	APP CRS 193°	Rwy Ldg TDZE Apt Elev	9072 1205 1205
--	------------------------	-----------------------------	---

RNAV (GPS) RWY 19

MARQUETTE/SAWYER RGNL (SAW)

RNP APCH - GPS.			MISSED APPROACH: Climb to 3500 direct EVYIP and hold.	
▼ For uncompensated Baro-VNAV systems, LNAV/VNAV NA below -17°C or above 54°C.				
AWOS-3PT 118.375	MINNEAPOLIS CENTER 119.1 290.2	SAWYER TOWER ★ 119.975 (CTAF) 0	GND CON 121.65	UNICOM 122.7



3500 EVYIP		VGSI and RNAV glidepath not coincident (VGSI Angle 3.00/TCH 53).		4 NM Holding Pattern	
↑		YAFDY 2900		ZUCTI 6000	
VEKUY 2.2 NM to RW19		193°		193°	
1.6 NM to RW19		1960		2900	
RW19		1.6 NM		0.6 NM	
		2.9 NM		6.5 NM	
CATEGORY	A	B	C	D	
LPV DA	1405- ³ / ₄ 200 (200- ³ / ₄)				
LNAV/VNAV DA	1522- ⁷ / ₈ 317 (400- ⁷ / ₈)				
LNAV MDA	1620-1	415 (500-1)	1620-1 ¹ / ₈	415 (500-1 ¹ / ₈)	
CIRCLING	1680-1	475 (500-1)	1820-1 ³ / ₄ 615 (700-1 ³ / ₄)	1820-2 615 (700-2)	