

TACAN Y RWY 33

TACAN BAB Chan 23	APCH CRS 317°	Rwy ldg TDZE Arprt Elev	12,001 105 113
----------------------	------------------	-------------------------------	----------------------

- (USAF)

BEALE AFB (KBAB)

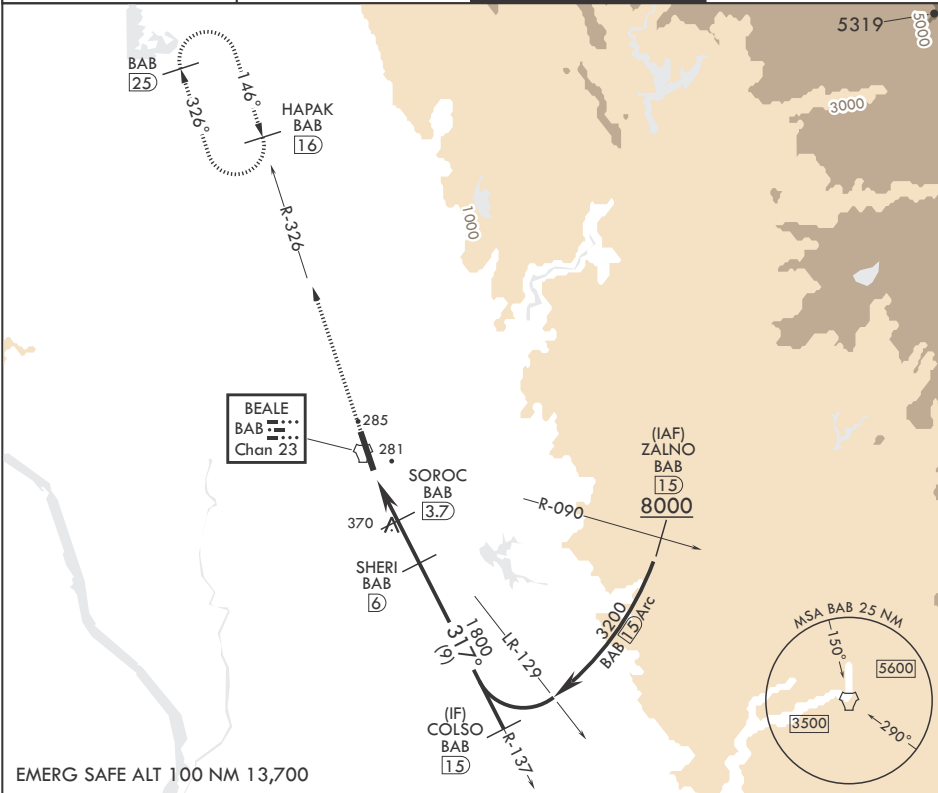
⚠ *When ALS inop, increase CAT AB RVR to 55 and vis to 1 mile, CAT CDE vis to 1 1/4 miles.
**Circling not authorized E of Rwy 15-33.

ALSF-1



MISSED APPROACH: Climb to 3600 intercept BAB TACAN R-326 to HAPAK and hold.

ATIS★ 124.55 273.5	NORCAL APP CON 125.4 259.1	TOWER★ 119.4 284.75	GND CON 121.6 257.75
-----------------------	-------------------------------	------------------------	-------------------------



EMERG SAFE ALT 100 NM 13,700

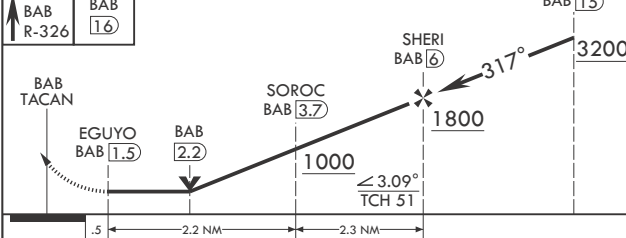
3600
BAB
R-326

HAPAK
BAB
16

COLSO
BAB
15

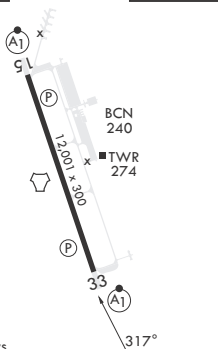
ELEV 113

TDZE 105



CATEGORY	A	B	C	D	E
S-33*	540/24 435 (500-½)	540/40 435 (500-¾)	600-1½ 487 (500-1½)	800-2¼ 687 (700-2¼)	800-2½ 687 (700-2½)
C CIRCLING**	600-1 487 (500-1)				

HIRL all Rwy



TACAN Y RWY 33

SW-2, 10 JUL 2025 to 07 AUG 2025

SW-2, 10 JUL 2025 to 07 AUG 2025