

RNAV (GPS) RWY 33

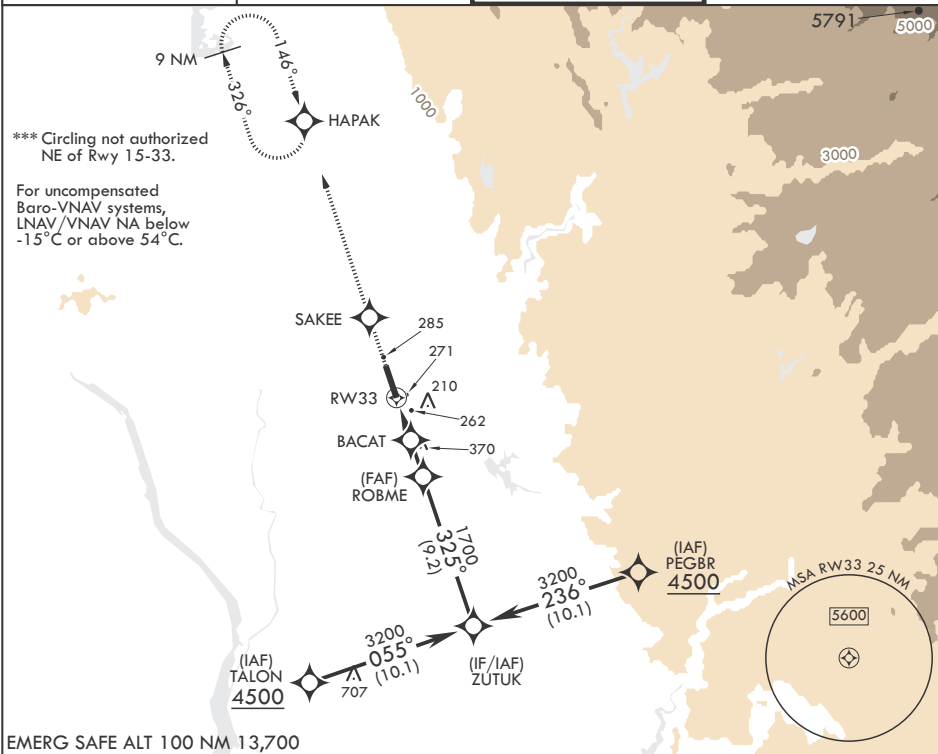
APCH CRS	Rwy Idg	12,001
325°	THRE	105
	Arprt Elev	113

- (USAF)

BEALE AFB (KBAB)

RNP APCH	ALSF-1	MISSED APPROACH: Climb to 3600 direct SAKEE, track 326° to HAPAK and hold.
<p>▼ * When ALS inop, increase vis to 1 1/4 miles. ** When ALS inop, increase CAT AB RVR to 55 and vis to 1 mile, CAT CDE vis to 1 1/4 miles.</p>		

ATIS★ 124.55 273.5	NORCAL APP CON 125.4 259.1	TOWER★ 119.4 284.75	GND CON 121.6 257.75
-----------------------	-------------------------------	------------------------	-------------------------



EMERG SAFE ALT 100 NM 13,700

3600 SAKEE

RW33 1.2 NM to RW33 BACAT 980 ROBME 325° 3200 ZUTUK

2.6 NM 2.3 NM

GP 3.00° TCH 50

CATEGORY	A	B	C	D	E
LNAV/VNAV DA*	540/40		435	(500-¾)	
LNAV MDA**	540/24	435 (500-½)	540/40	435	(500-¾)
<b>C</b> CIRCLING***	600-1	487 (500-1)	600-1½ 487 (500-1½)	800-2¼ 687 (700-2¼)	800-2½ 687 (700-2½)

ELEV 113 THRE 105

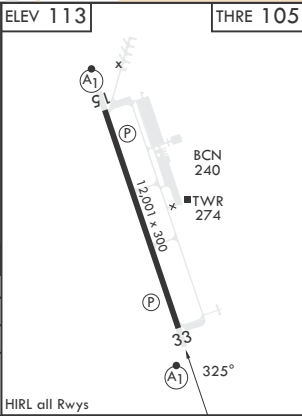
33 51 325°

12.001 NM

3200

BCN 240 TWIR 274

HIRL all Rwys



RNAV (GPS) RWY 33

SW-2, 10 JUL 2025 to 07 AUG 2025

SW-2, 10 JUL 2025 to 07 AUG 2025