

APCH CRS	Rwy Idg	12,001
145°	THRE	113
	Arprt Elev	113

- (USAF)

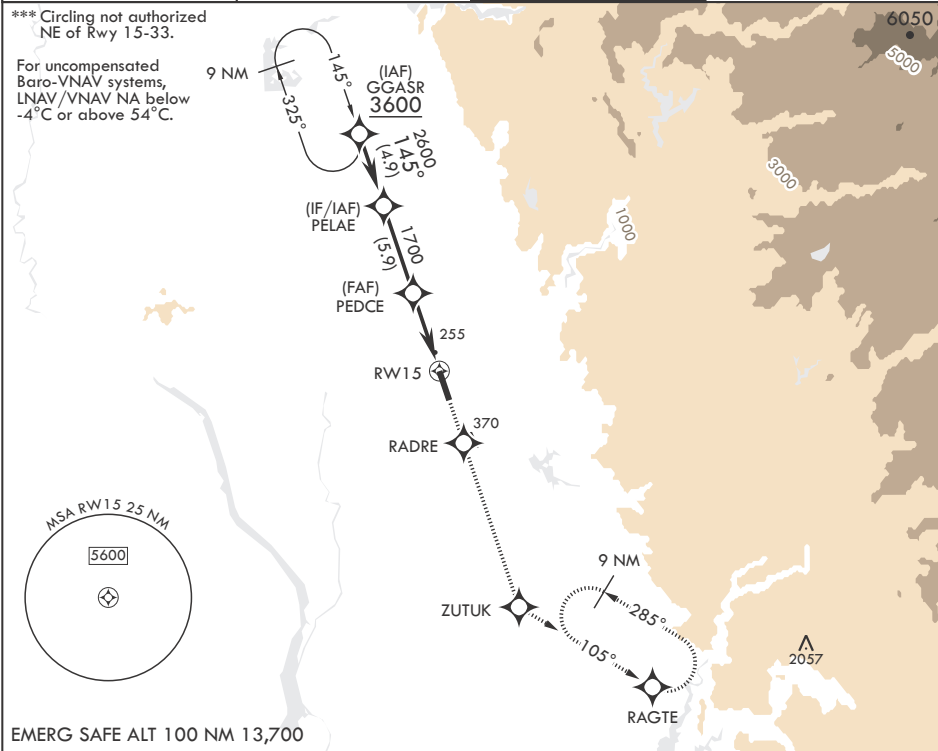
BEALE AFB (KBAB)

RNP APCH

▼ * When ALS inop, increase RVR to 60, vis to 1 1/8 miles.
** When ALS inop, increase CAT AB RVR to 55 and vis to 1 mile;
CAT CDE vis to 1 3/8 miles.

ALSF-1 MISSED APPROACH: Climb to 3600 direct
RADRE, track 145° to ZUTUK, track 105° to
RAGTE and hold, continue climb-in-hold to
3600.

ATIS★ 124.55 273.5	NORCAL APP CON 125.4 259.1	TOWER★ 119.4 284.75	GND CON 121.6 257.75
-----------------------	-------------------------------	------------------------	-------------------------



EMERG SAFE ALT 100 NM 13,700

PELAE		VGSI and RNAV glidepath not coincident (VGSI Angle 2.75/TCH 53).			3600	RADRE	tr 145°	ZUTUK	ELEV 113	THRE 113			
2600	145°		PEDCE	1700	1.5 NM to RW15	RW15							
GP 2.75° TCH 47	5.3 NM												
CATEGORY	A	B	C	D	E								
LNAV/VNAV DA*	530/40		417		(500-¾)								
LNAV MDA**	600/24 487 (500-½)		600/50		487 (500-1)								
CIRCLING***	600-1 487 (500-1)		600-1½ 487 (500-1½)		800-2¼ 687 (700-2¼)	800-2½ 687 (700-2½)							