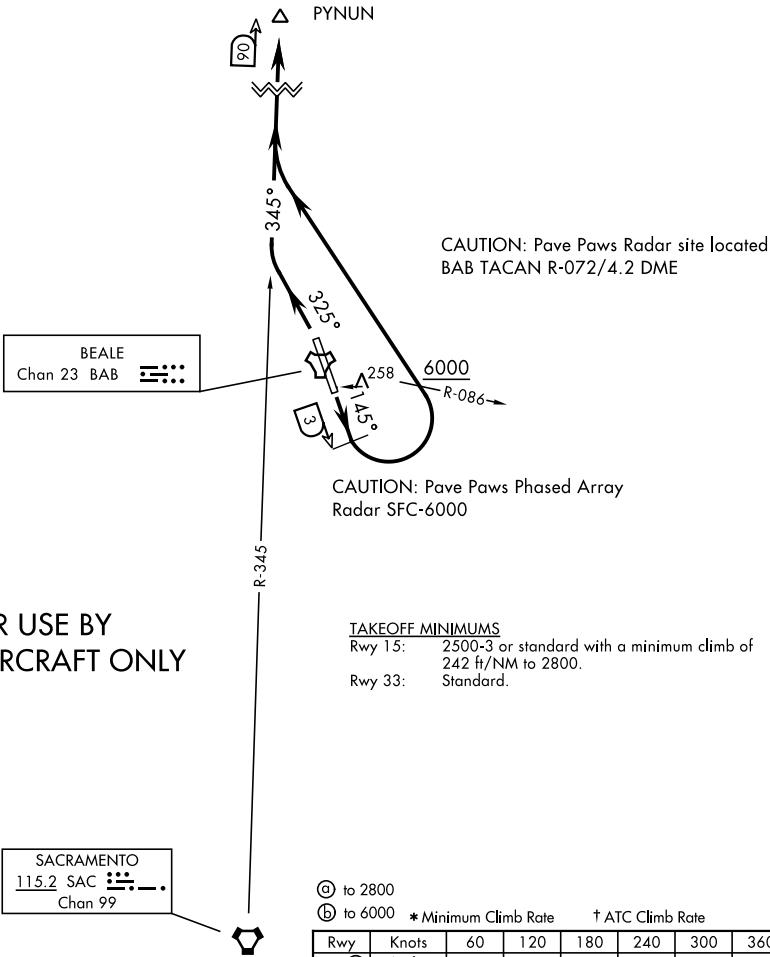


ATIS ★
124.55 273.5
GND CON
121.6 257.75
BEALE TOWER ★
119.4 284.75
NORCAL DEP CON
125.4 259.1



DEPARTURE ROUTE DESCRIPTION

TAKEOFF RWY 15: Fly heading 145° until BAB TACAN 3 DME, turn left heading 300° to intercept SAC VORTAC R-345 to PYNUN. Cross BAB R-086 at or above 6000. Then via assigned route.

TAKEOFF RWY 33: Fly heading 325° intercept SAC VORTAC R-345 to PYNUN. Then via assigned route.