

ILS or LOC Y RWY 33

LOC I-MIZ 109.5	APCH CRS 325°	Rwy Idg 12,001
		TDZE 105
		Arprt Elev 113

- (USAF)

BEALE AFB (KBAB)

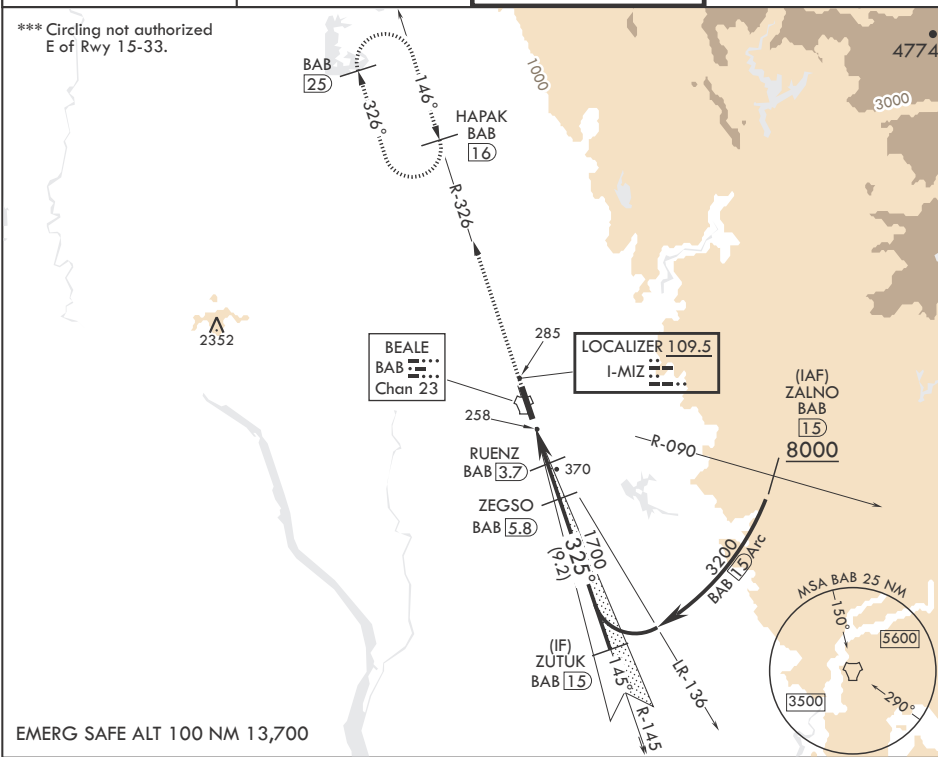
RADAR or DME required

▼ * When ALS inop, increase RVR to 40 and vis to 3/4 mile.
** When ALS inop, increase CAT AB RVR to 55 and vis to 1 mile;
CAT CDE RVR to 60 and vis to 1 1/8 miles.

ALSF-1

MISSED APPROACH: Climb to 3600 intercept
BAB TACAN R-326 to HAPAK and hold.

ATIS★ 124.55 273.5	NORCAL APP CON 125.4 259.1	TOWER★ 119.4 284.75	GND CON 121.6 257.75
-----------------------	-------------------------------	------------------------	-------------------------



EMERG SAFE ALT 100 NM 13,700

3600
BAB
R-326

HAPAK
BAB
16

ZUTUK
BAB
15

ZEGSO
BAB
5.8

RUENZ
BAB
3.7

BAB
TACAN

ZAPUX
BAB
1.5

BAB
2.1

1000

1700

325°

3200

GS 3.00°
TCH 50

0.5

2.2 NM

2.1 NM

ELEV 113

TDZE 105

A1

325°

12,000 x 300

BCN 240

TWR 274

33

A1

CATEGORY	A	B	C	D	E
S-ILS 33*	305/24		200	(200-1/2)	
S-LOC 33**	520/24	415 (500-1/2)	520/40	415	(500-3/4)
CIRCLING***	600-1	487 (500-1)	600-1 1/2 487 (500-1 1/2)	800-2 1/4 687 (700-2 1/4)	800-2 1/2 687 (700-2 1/2)

HIRL all Rwys

ILS or LOC Y RWY 33

SW-2, 10 JUL 2025 to 07 AUG 2025

SW-2, 10 JUL 2025 to 07 AUG 2025