

MARYSVILLE, CALIFORNIA

HI-TACAN Z RWY 33

TACAN BAB Chan 23	APCH CRS 317°	Rwy ldg TDZE Arprt Elev	12,001 105 113
----------------------	------------------	-------------------------------	----------------------

- (USAF)

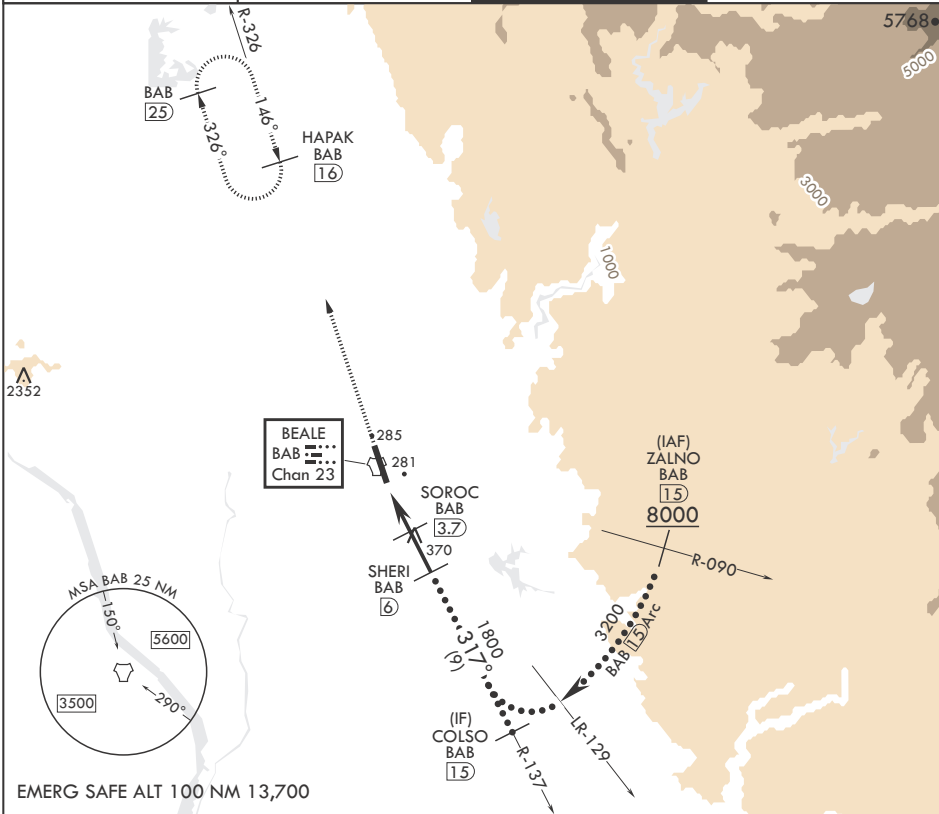
BEALE AFB (KBAB)

⚠ \* When ALS inop, increase CAT CDE vis to 1 1/4 miles.  
\*\* Circling not authorized NE of Rwy 15-33.

ALSF-1

MISSED APPROACH: Climb to 3600, intercept BAB TACAN R-326 to HAPAK and hold.

ATIS★ 124.55 273.5	NORCAL APP CON 125.4 259.1	TOWER★ 119.4 284.75	GND CON 121.6 257.75
-----------------------	-------------------------------	------------------------	-------------------------



EMERG SAFE ALT 100 NM 13,700

3600 BAB R-326	HAPAK BAB 16
----------------------	--------------------

CATEGORY	C	D	E
S-33*	540/40	435	(500-3/4)
CIRCLING**	600-1½ 487 (500-1½)	800-2¼ 687 (700-2¼)	800-2½ 687 (700-2½)

ELEV 113 TDZE 105

MARYSVILLE, CALIFORNIA

39°08'N - 121°26'W

BEALE AFB (KBAB)

Amtdt 6 25JAN24

HI-TACAN Z RWY 33