

MARYSVILLE, CALIFORNIA

HI-ILS or LOC Z RWY 33

LOC I-MIZ 109.5	APCH CRS 325°	Rwy Idg 12,001
		TDZE 105
		Arprt Elev 113

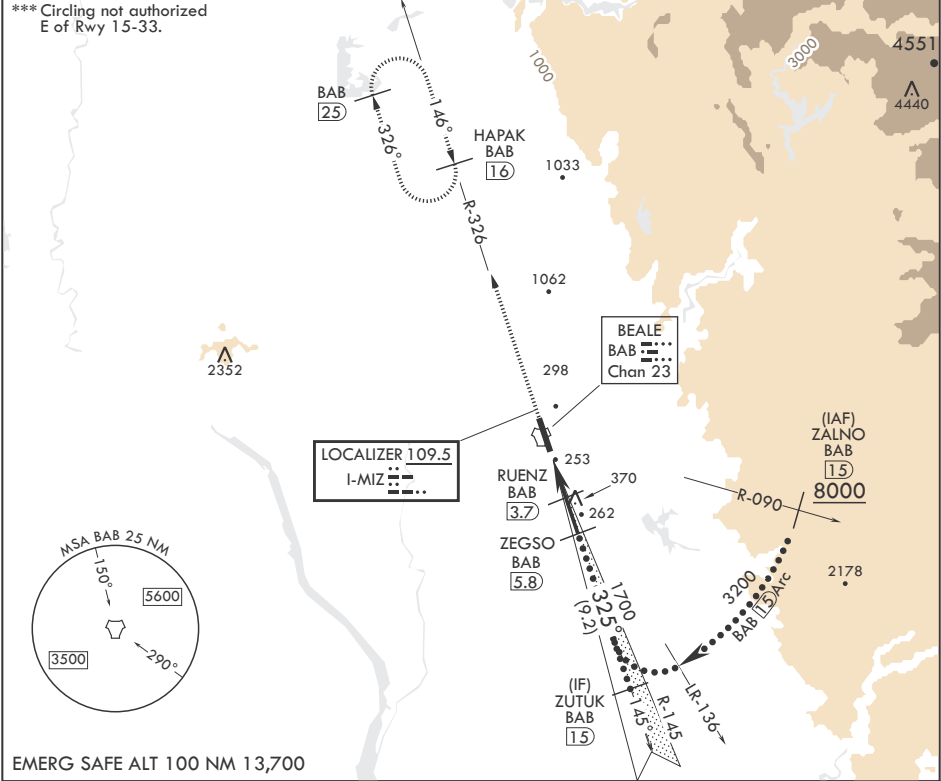
- (USAF)

BEALE AFB (KBAB)

RADAR or DME required	ALSIF-1	MISSED APPROACH: Climb to 3600 intercept BAB R-326 to HAPAK and hold.
▼ * When ALS inop, increase CAT CDE RVR to 40 and vis to 3/4 mile. ** When ALS inop, increase CAT CDE RVR to 60 vis to 1 1/8 miles.	A1	

ATIS★ 124.55 273.5	NORCAL APP CON 125.4 259.1	TOWER★ 119.4 284.75	GND CON 121.6 257.75
-----------------------	-------------------------------	------------------------	-------------------------

*** Circling not authorized
E of Rwy 15-33.



EMERG SAFE ALT 100 NM 13,700

3600 BAB R-326	HAPAK BAB 16	ZUTUK R-145 BAB 15	ZALNO R-090 BAB 15	ELEV 113	TDZE 105
BAB TACAN	ZAPUX BAB 1.5	BAB 2.1	RUENZ BAB 3.7	ZEGSO BAB 5.8	325°
					3200
					1700
					1000
					0.5
					2.2 NM
					2.1 NM
					15 Arc
					GS 3.00°
					TCH 50
CATEGORY	C	D	E		
S-ILS 33*	305/24	200	(200-½)		
S-LOC 33**	520/40	415	(500-¾)		
CIRCLING***	600-1½ 487 (500-1½)	800-2¼ 687 (700-2¼)	800-2½ 687 (700-2½)		

HIRL all Rws

MARYSVILLE, CALIFORNIA

39°08'N - 121°26'W

BEALE AFB (KBAB)

Amndt 6 25JAN24

HI-ILS or LOC Z RWY 33