

MARYSVILLE, CALIFORNIA

HI-ILS or LOC Z RWY 15

LOC I-BAB <u>109.5</u>	APCH CRS 145°	Rwy Idg 12,001 TDZE 113 Arpt Elev 113
----------------------------------	-------------------------	--

- (USAF)

BEALE AFB (KBAB)

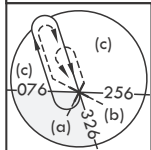
RADAR or DME required

T * When ALS inop, increase CAT CDE RVR to 40 and vis to 3/4 mile.
 ** When ALS inop, increase CAT CDE vis to 1 3/8 miles.

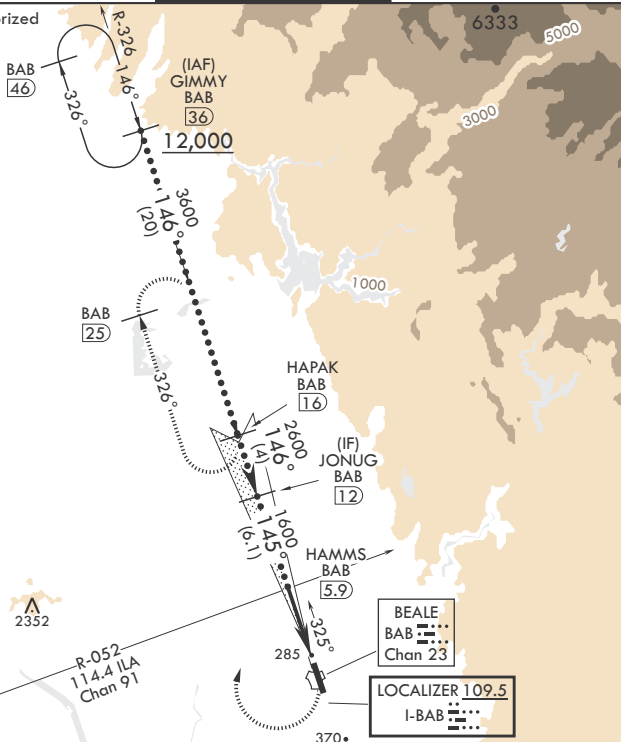
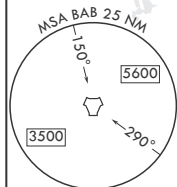
ALSF-1

MISSED APPROACH: Climb to to 700 on heading 145°, then climbing right turn to 4400 heading 011° to intercept BAB R-326 to HAPAK and hold, continue climb in hold to 4400.

ATIS★ 124.55 273.5	NORCAL APP CON 125.4 259.1	TOWER★ 119.4 284.75	GND CON 121.6 257.75
-----------------------	-------------------------------	------------------------	-------------------------

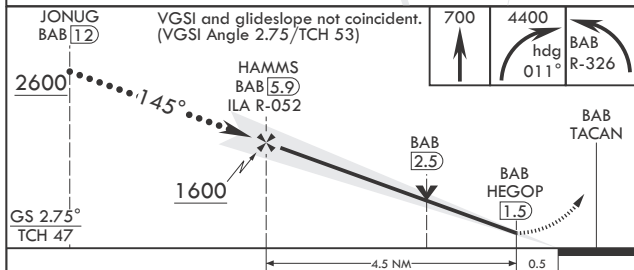


*** Circling not authorized
E of Rwy 15-33.

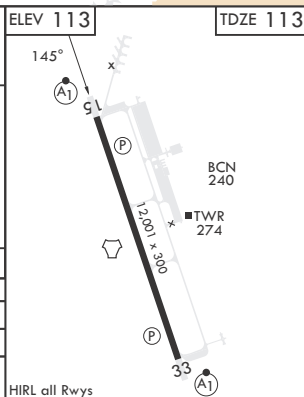


EMERG SAFE ALT 100 NM 13.700

JONUG BAB 12	VGSI and glideslope not coincident. (VGSI Angle 2.75/TCH 53)
-----------------	---



CATEGORY	C	D	E
S-ILS 15*	313/24	200	(200-½)
S-LOC 15**	600/50	487	(500-1)
C CIRCLING***	600-1½ 487 (500-1½)	800-2¼ 687 (700-2¼)	800-2½ 687 (700-2½)



MARYSVILLE, CALIFORNIA

39°08'N - 121°26'W

BEALE AFB (KBAB)

Amdt 6 25JAN24

HI-ILS or LOC Z RWY 15