

TACAN RWY 30

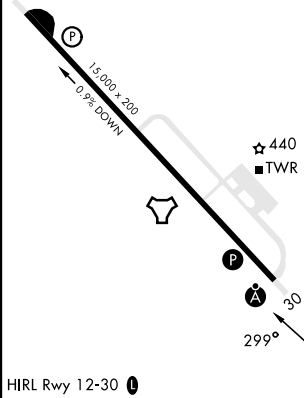
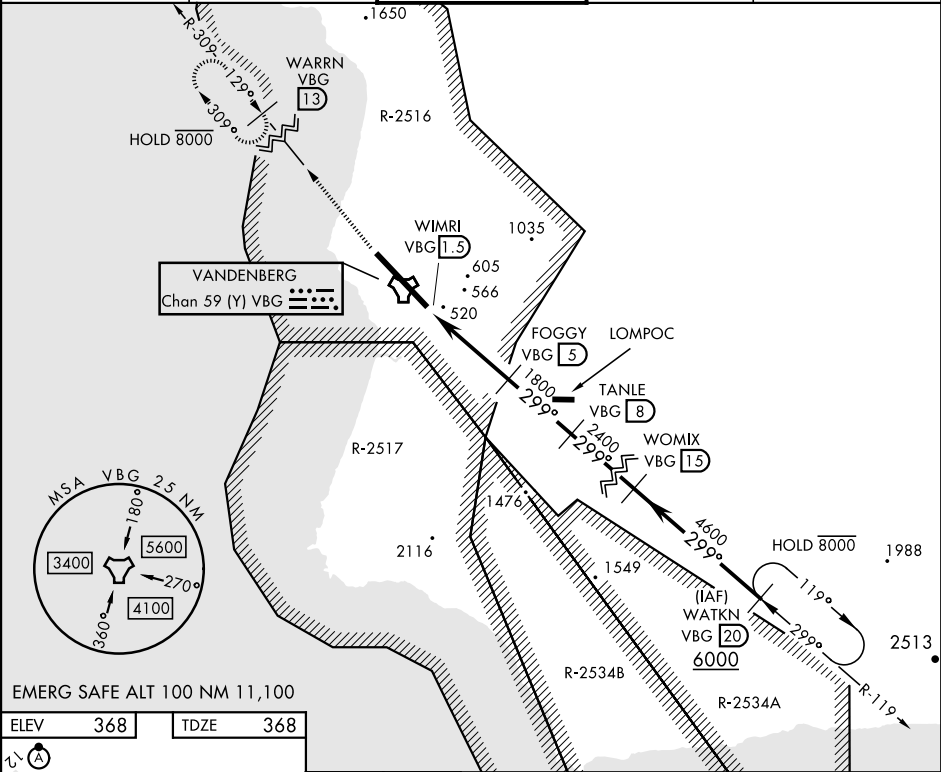
VANDENBERG SFB (KVBG)

TACAN VBG Chan 59(Y)	APCH CRS 299°	Rwy Idg 15,000 TDZE 368 Arpt Elev 368
--------------------------------	-------------------------	--

[USSF]

V * When ALS inop, increase CAT AB RVR to 55 and vis to 1 mile, CAT CDE vis to 1½ miles.	ALSF-2 	MISSED APPROACH: Climb out VBG TACAN R-309 to WARRN and hold. Continue climb in hold maintain 4000.
---	------------	---

ATIS 133.125 257.975	SANTA BARBARA APP/DEP CON★ 124.15 327.8	TOWER★ 124.95 (CTAF) 326.2	GND CON 121.75 275.8	CLNC DEL 121.75 275.8
--------------------------------	--	---	--------------------------------	---------------------------------



CATEGORY	A	B	C	D	E
S-30 *	920/24 552 (600-½)		920/60 552 (600-1½)		
CIRCLING	980-1 612 (700-1)	1000-1 632 (700-1)	1020-1¾ 652(700-1¾)	1180-2¾ 812(900-2¾)	1560-3 1192(1200-3)

TACAN RWY 30