

TACAN RWY 12

TACAN VBG Chan <b>59(Y)</b>	APCH CRS <b>129°</b>	Rwy Idg <b>15,000</b> TDZE <b>265</b> Arpt Elev <b>368</b>
--------------------------------	-------------------------	--

[USSF]

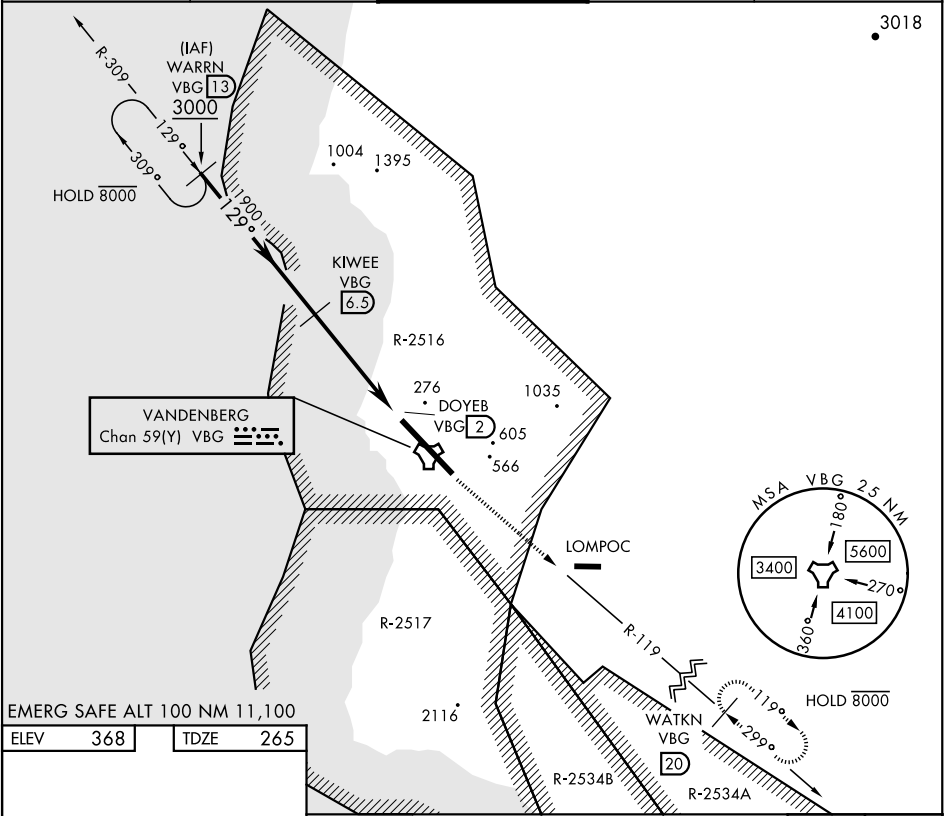
VANDENBERG SFB (KVBG)

▼ \* When ALS inop, increase CAT AB RVR to 55 and vis to 1 mile; CAT CDE vis to 1½ miles.

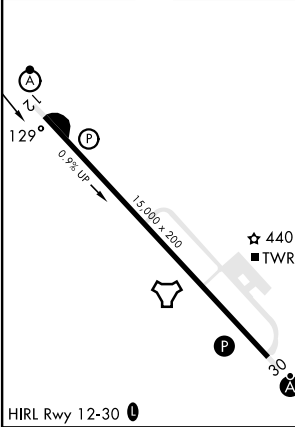
ALS-F-2

MISSED APPROACH: Climb out VBG TACAN R-119 until 20 DME (WATKN) and hold. Continue climb in hold maintain 7000.

ATIS <b>133.125 257.975</b>	SANTA BARBARA APP/DEP CON★ <b>124.15 327.8</b>	TOWER★ <b>124.95 0</b> (CTAF) <b>326.2</b>	GND CON <b>121.75 275.8</b>	CLNC DEL <b>121.75 275.8</b>
--------------------------------	--	---	--------------------------------	---------------------------------



EMERG SAFE ALT 100 NM 11,100			
ELEV	368	TDZE	265



WARRN VBG 13 3000

KIWEE VBG 6.5 1900

DOYEB VBG 2 7000

WATKN VBG 20 1560-3

3.03° TCH 52

4.5 NM

0.5

CATEGORY	A	B	C	D	E
S-12*	740/24	475 (400-½)	740/50	475 (400-1)	
CIRCLING	980-1 612 (700-1)	1000-1 632 (700-1)	1020-1¾ 652 (700-1¾)	1180-2¾ 812 (900-2¾)	1560-3 1192 (1200-3)

TACAN RWY 12

SW-3, 10 JUL 2025 to 07 AUG 2025

SW-3, 10 JUL 2025 to 07 AUG 2025