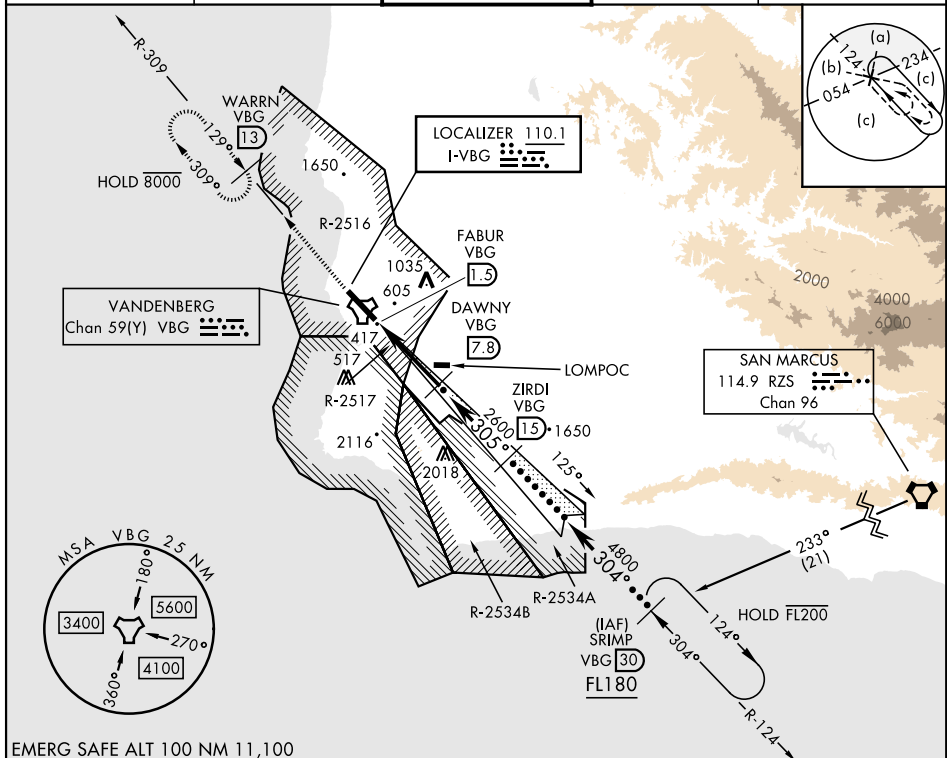


HI-ILS or LOC/DME RWY 30

LOC I-VBG 110.1	APCH CRS 305°	Rwy Idg 15,000 TDZE 368 Arpt Elev 368	[USSF]	VANDENBERG SFB (KVBG)
---------------------------	-------------------------	--	--------	-----------------------

DME required ▼ * When ALS inop, increase CAT CDE RVR to 40 and vis to ¾ mile. ** When ALS inop, increase CAT CDE vis to 1½ miles.	ALSF-2 	MISSED APPROACH: Climb out VBG TACAN R-309 to WARRN and hold. Continue climb in hold maintain 4000.
---	------------	---

ATIS 133.125 257.975	SANTA BARBARA APP/DEP CON ★ 124.15 327.8	TOWER ★ 124.95 (CTAF) 326.2	GND CON 121.75 275.8	CLNC DEL 121.75 275.8
--------------------------------	---	--	--------------------------------	---------------------------------



EMERG SAFE ALT 100 NM 11,100

4000 ↑ VBG R-309	WARRN VBG 13	VGSI and ILS Glideslope not coincident.			ZIRDI VBG 15	SRIMP VBG 30	ELEV 368	TDZE 368
<p>Diagram showing the approach path with altitudes (4000, 2600, 4800) and distances (0.5 NM, 6.3 NM). It also includes the (IAF) SRIMP VBG 30 FL180 and GS 3.00° TCH 72.</p>							<p>Diagram showing the runway (RWY 30) and taxiway (TAXI 30) with altitudes (382, 325, 440) and distances (15,000 x 300, 0.2% DOWN). It also includes the HIRL Rwy 12-30 and TW R.</p>	
CATEGORY	C		D		E			
S-ILS 30 *	568/24		200 (200-½)					
S-LOC 30 **	900/55		532 (600-1)					
CIRCLING	1020-1¾ 652 (700-1¾)		1180-2¾ 812 (900-2¾)		1560-3 1192 (1200-3)			

HI-ILS or LOC/DME RWY 30