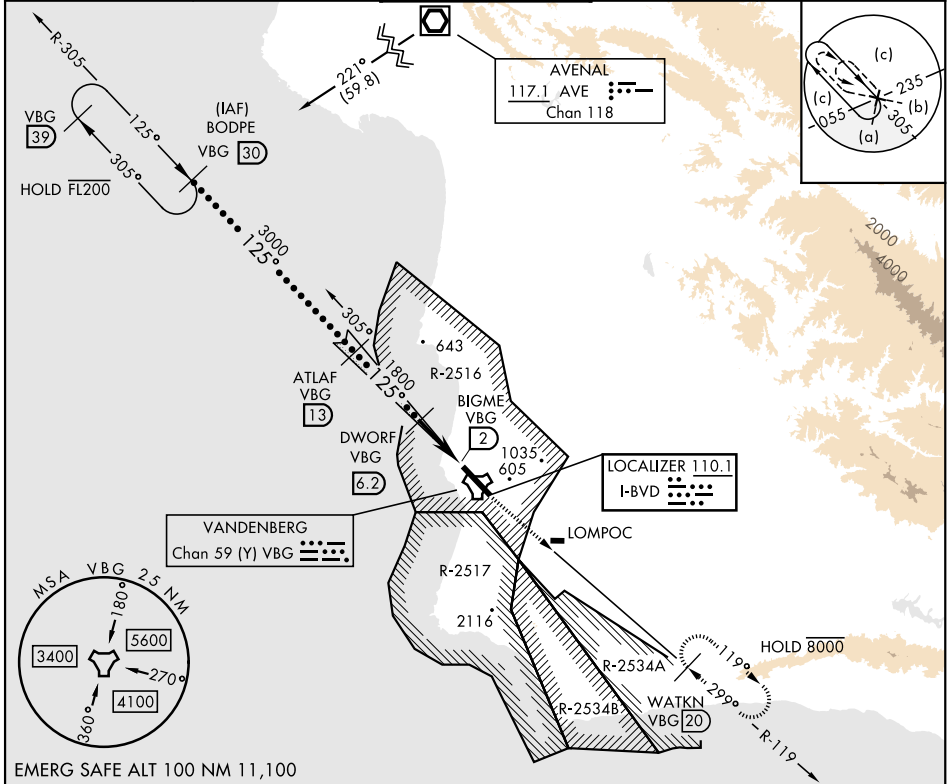


LOC I-BVD 110.1	APCH CRS 125°	Rwy Idg 15,000 TDZE 265 Arpt Elev 368	[USSF]	VANDENBERG SFB (KVBG)
DME required			ALSF-2	MISSED APPROACH: Climb out VBG TACAN R-119 until 20 DME (WATKN) and hold. Continue climb in hold maintain 7000.
* When ALS inop, increase RVR to 40 and vis to ¾ mile. ** When ALS inop, increase CAT CDE vis to 1¼ mile.				
ATIS 133.125 257.975	SANTA BARBARA APP/DEP CON★ 124.15 327.8	TOWER★ (CTAF) 124.95 326.2	GND CON 121.75 275.8	CLNC DEL 121.75 275.8



BODPE VBG 30		ATLAF VBG 13	DWORF VBG 6.2	VBG 2.8	BIMGE VBG 2	WATKN VBG 20	ELEV 368	TDZE 265
FL180		3000	1800	1800	1800	7000	125°	
GS 3.00° TCH 52		VGS and descent angles not coincident		4.3 NM		0.5 NM	315	
CATEGORY		C	D	E				
S-ILS 12 *		465/24	200	(100-½)				
S-LOC 12**		700/40	435	(400-¾)				
CIRCLING		1020-1¼ 652 (700-1¼)	1180-2¼ 812 (900-2¼)	1560-3 1192 (1200-3)				