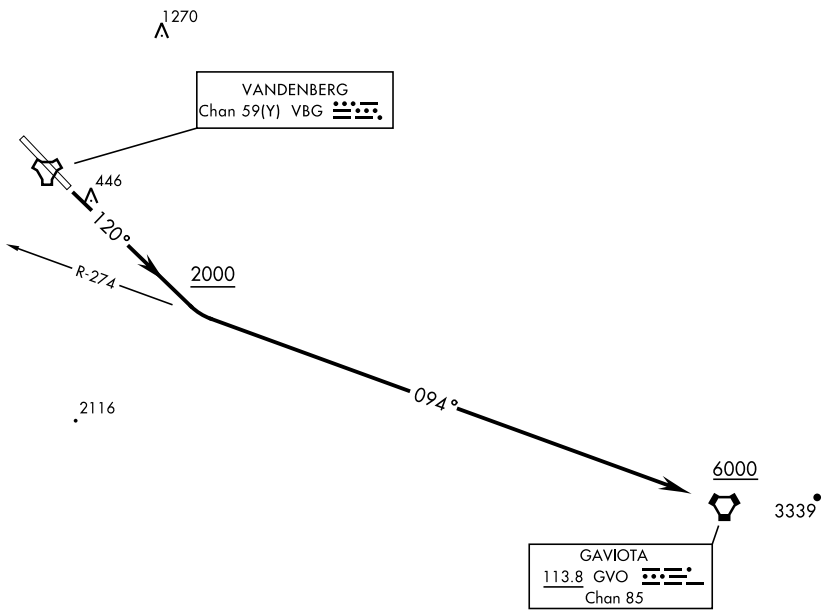


ATIS	[USSF]	Rwy	Knots	60	120	180	240	300	360
133.125 257.975		12	V/V(fpm)	330	660	990	1320	1650	1980
GND CON									
121.75 275.8									
CLNC DEL									
121.75 275.8									
VANDENBERG TOWER ★									
124.95 326.2									
SANTA BARBARA DEP CON ★									
124.15 327.8									

Minimum Climb Rate to 1500



Use extreme caution for extensive UAS ops in the vicinity

▼

DEPARTURE ROUTE DESCRIPTION

TAKEOFF RWY 12: Climb on track 120° to 2000. Then climbing left turn to intercept the GVO VORTAC R-274 inbound to GVO. Cross GVO at or above 6000. Expect vectors to first filed fix/route prior to GVO.