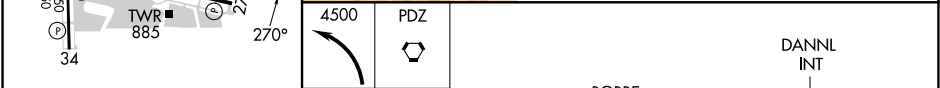
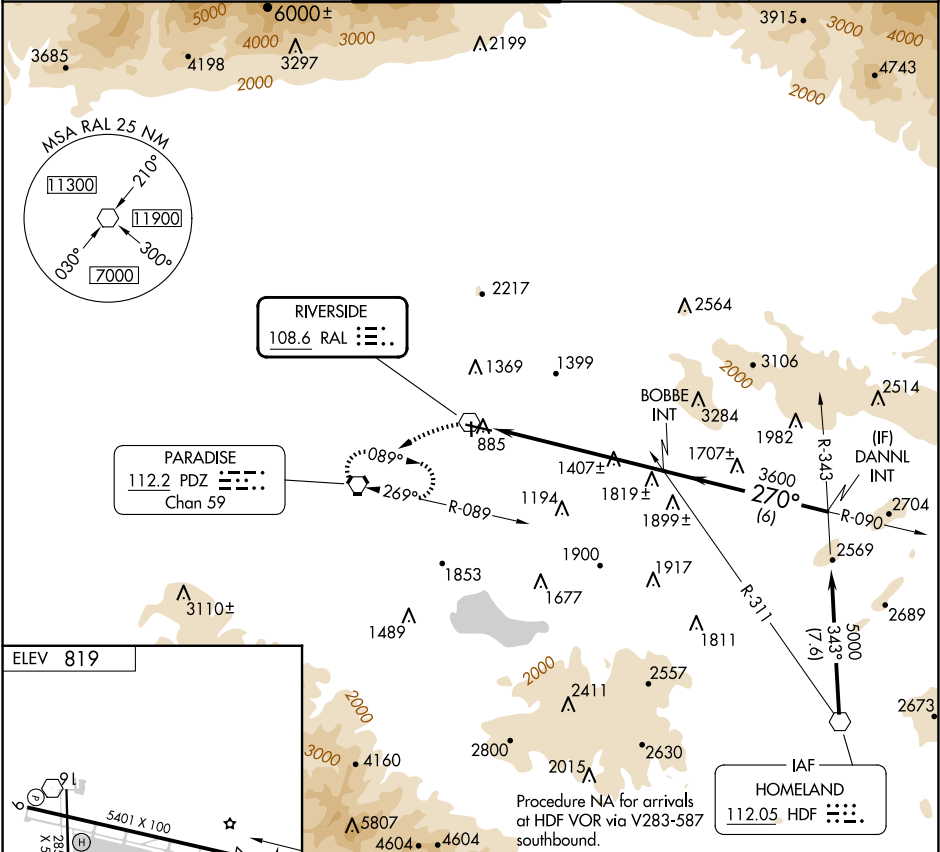


VOR RAL <b>108.6</b>	APP CRS <b>270°</b>	Rwy Idg TDZE Apt Elev <b>N/A</b> <b>N/A</b> <b>819</b>	VOR-A RIVERSIDE MUNI (RAL)
-------------------------	------------------------	---	-------------------------------

When local altimeter setting not received, use Chino altimeter setting and increase all MDAs 60 feet.

MISSED APPROACH: Climbing left turn to 4500 direct PDZ VORTAC and hold, continue climb-in-hold to 4500.

ATIS <b>128.8</b>	SOCAL APP CON <b>135.4 377.125</b>	RIVERSIDE TOWER ★ <b>121.0</b> (CTAF) <b>257.8</b>	GND CON <b>124.12</b>	UNICOM <b>122.95</b>
----------------------	---------------------------------------	---	--------------------------	-------------------------



MIRL Rwys 9-27 and 16-34				
FAF to MAP 6.4 NM				
CATEGORY	A	B	C	D
CIRCLING	2300-1¼ 1481 (1500-1¼)	2300-1½ 1481 (1500-1½)	2300-3 1481 (1500-3)	NA