

RIVERSIDE, CALIFORNIA

AL-769 (FAA)

25107

WAAS CH 82201 W27A	APP CRS 269°	Rwy Idg 5401 TDZE 818 Apt Elev 818
----------------------------------------	------------------------	---------------------------------------------------------------

RNAV (GPS) RWY 27
RIVERSIDE MUNI (RAL)

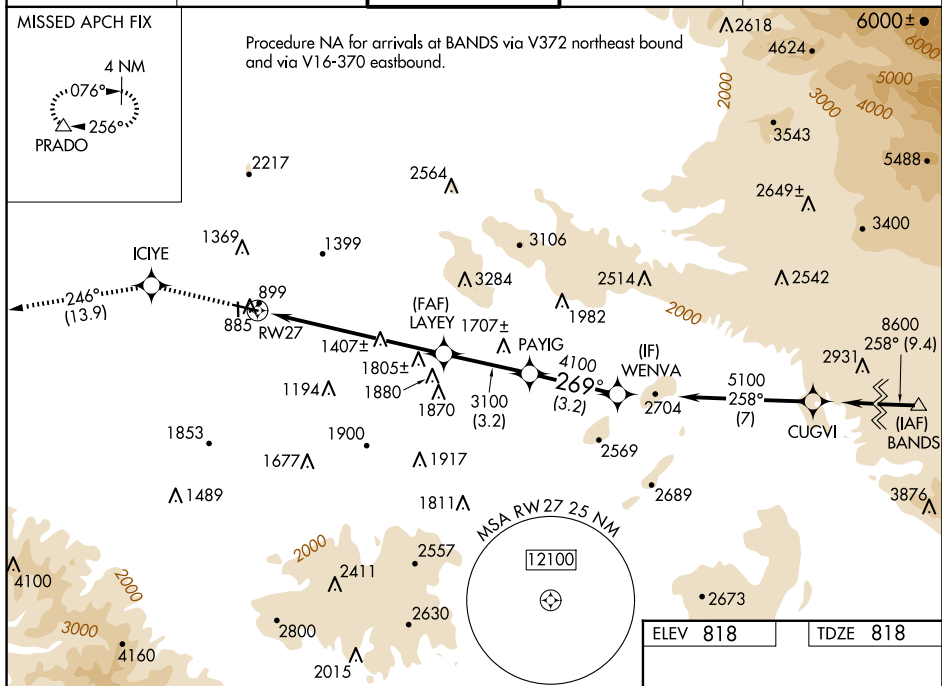
TA

MISSED APPROACH: Climb to 4000 direct ICIYE and via 246° track to PRADO and hold.

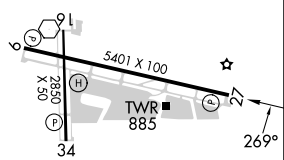
ATIS 128.8	SOCAL APP CON 135.4 377.125	RIVERSIDE TOWER ★ 121.0 (CTAF) 0 257.8	GND CON 124.12	UNICOM 122.95
---------------	--------------------------------	-------------------------------------------	-------------------	------------------

MISSED APCH FIX

Procedure NA for arrivals at BANDS via V372 northeast bound and via V16-370 eastbound.



ELEV 818	TDZE 818
----------	----------

MIRL Rwy 9-27 and 16-34 **L**

RIVERSIDE, CALIFORNIA
Orig-A 03DEC20

33°57'N-117°27'W

RIVERSIDE MUNI (RAL)
RNAV (GPS) RWY 27

SW-3, 10 JUL 2025 to 07 AUG 2025

SW-3, 10 JUL 2025 to 07 AUG 2025