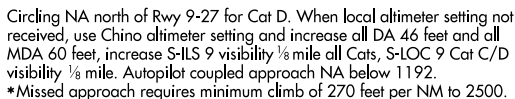
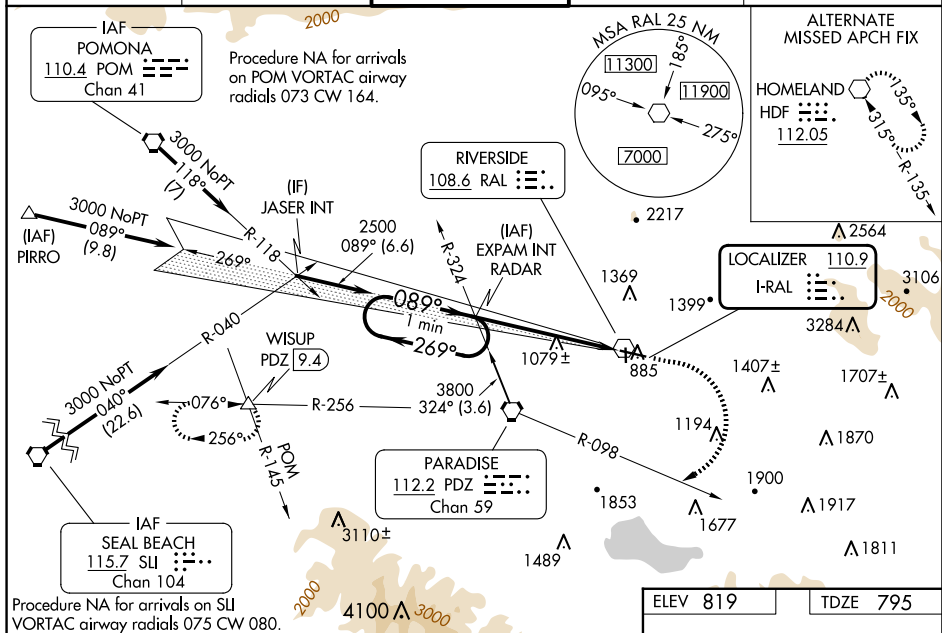


ILS or LOC RWY 9
RIVERSIDE MUNI (RAL)



MISSED APPROACH: Climb to 2000 then climbing right turn to 4200 on PDZ VORTAC R-098 to PDZ VORTAC then on PDZ VORTAC R-256 to WISUP INT/PDZ VORTAC 9.4 DME and hold.

UNICOM
122.95

089°

5401 X 100

2850 X 50

TWR 885

34

27

MRL Rwy's 9-27 and 16-34

FAF to MAP 5.3 NM

	60	90	120	150	180
Knots	5:18	3:32	2:39	2:07	1:46
Min:Sec					

SW-3, 10 JUL 2025 to 07 AUG 2025