

APP CRS
337°

Rwy Ldg
6431
TDZE
645
Apt Elev
645

RNAV (GPS) RWY 34
ADDISON (ADS)

RNP APCH-GPS.

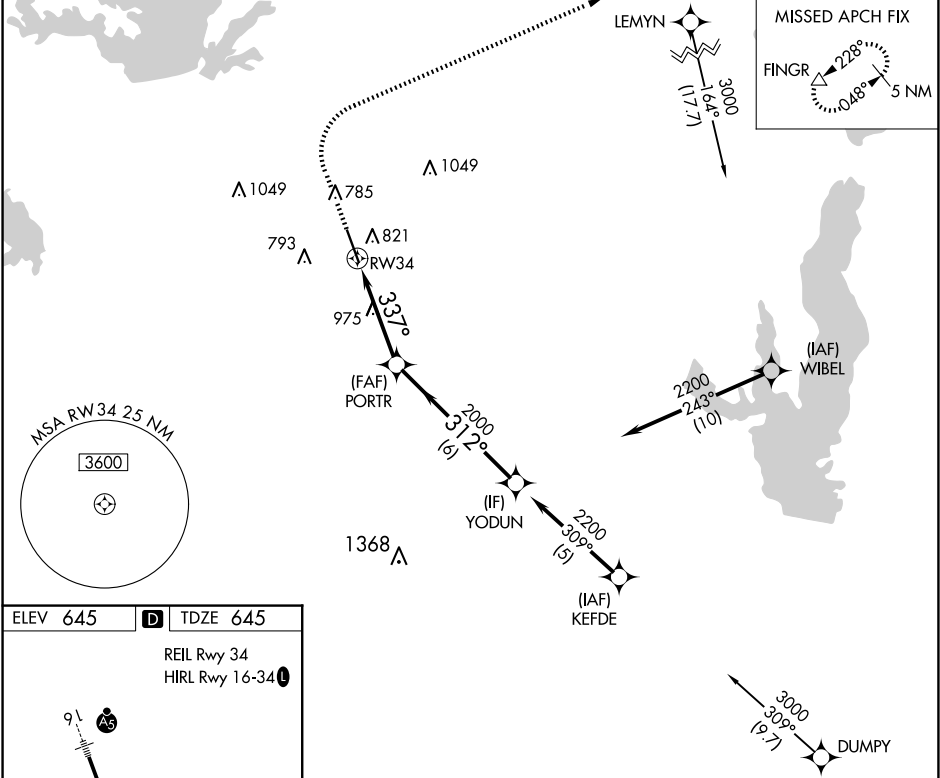
▼

▲

Rwy 34 helicopter visibility reduction below ¾ SM NA.

MISSED APPROACH: Climb to 1500 then climbing right turn to 5000 direct FINGR and hold.

ATIS	LONE STAR APP CON	ADDISON TOWER ★	GND CON	CLNC DEL	UNICOM
133.4	124.3 282.275	126.0 (CTAF) 239.0	121.6	119.55	122.95



ELEV 645

D

TDZE 645

REIL Rwy 34
HIRL Rwy 16-34

1500

5000

FINGR

VGSI and descent angles not coincident
(VGSI Angle 3.00/TCH 60)

YODUN

PORTR

2000

312°

337°

1.7 NM to RW34

1.7 NM

2.4 NM

6 NM

3.03°

TCH 54

CATEGORY	A	B	C	D
LNAV MDA	1240-1	595 (600-1)	1240-1¾	595 (600-1¾)
CIRCLING	1240-1	595 (600-1)	1280-1¾ 635 (700-1¾)	1400-2½ 755 (800-2½)