

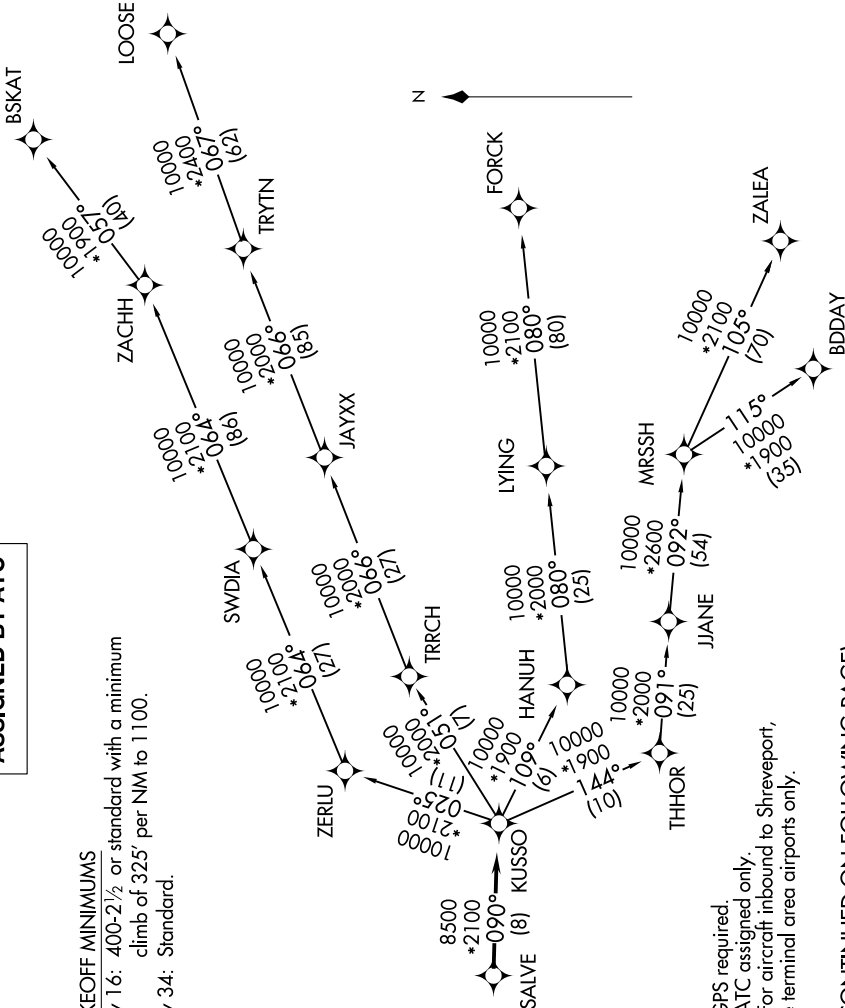
SC-2, 10 JUL 2025 to 07 AUG 2025

LONE STAR DEP CON
124.3 282.275
ATIS
133.4
CLNC DEL
119.55
GND CON
121.6
ADDISON TOWER ★
126.0 (CTAF) 239.0

TOP ALTITUDE:
ASSIGNED BY ATC

TAKEOFF MINIMUMS

Rwy 16: 400-2½ or standard with a minimum
climb of 325' per NM to 1100.
Rwy 34: Standard.



NOTE: RADAR required.
NOTE: RNAV 1.
NOTE: DME/DME/IRU or GPS required.
NOTE: BDDAY Transition: ATC assigned only.
NOTE: MRSSH Transition: For aircraft inbound to Shreveport,
Jackson and Monroe terminal area airports only.

(CONTINUED ON FOLLOWING PAGE)

NOTE: Chart not to scale.

SC-2, 10 JUL 2025 to 07 AUG 2025