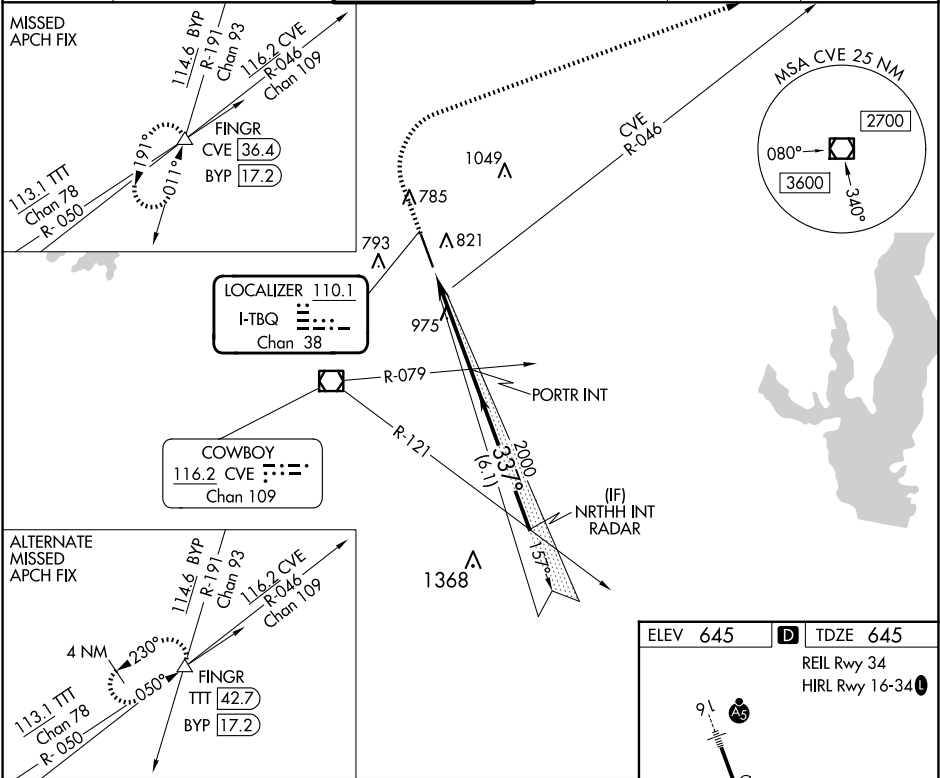
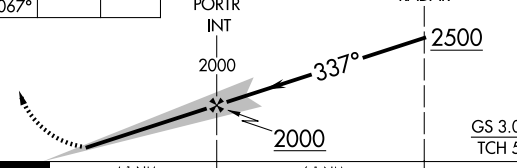


LOC/DME I-TBQ 110.1 Chan 38	APP CRS 337°	Rwy Ldg TDZE 645 Apt Elev 645	ILS or LOC RWY 34 ADDISON (ADS)	
---	------------------------	---	------------------------------------	--

DME Required. RADAR required for procedure entry.		MISSED APPROACH: Climb to 1500 then climbing right turn to 5000 on heading 067° and CVE VOR/DME R-046 to FINGR/CVE 36.4 DME and hold.
<div><div><div><div><div></div><div></div></div><div><div></div><div></div></div></div><div><div></div><div></div></div></div></div> <div>Rwy 34 helicopter visibility reduction below ¾ SM NA.</div>		

ATIS 133.4	LONE STAR APP CON 124.3 282.275	ADDISON TOWER ★ 126.0 (CTAF) 239.0	GND CON 121.6	CLNC DEL 119.55	UNICOM 122.95
----------------------	---	--	-------------------------	---------------------------	-------------------------



1500 ↑	5000 hdg 067°	CVE R-046	FINGR △	VGSI and ILS glidepath not coincident (VGSI Angle 3.00/TCH 60).		NRTTH INT RADAR	
				PORTR INT 2000		2500	
				GS 3.00° TCH 54			
CATEGORY	A	B	C	D			
S-ILS 34	895-¾ 250 (300-¾)						
S-LOC 34	1240-1 595 (600-1)		1240-1¾ 595 (600-1¾)				
FAF to MAP 4.1 NM							
Knots	60	90	120	150	180		
Min:Sec	4:06	2:44	2:03	1:38	1:22		