

WAAS CH 61105 W03A	APP CRS 030°	Rwy Idg 6801 TDZE 640 Apt Elev 640
--	------------------------	---


RNAV (GPS) RWY 3

CHARLOTTESVILLE-ALBEMARLE (CHO)

RNP APCH.

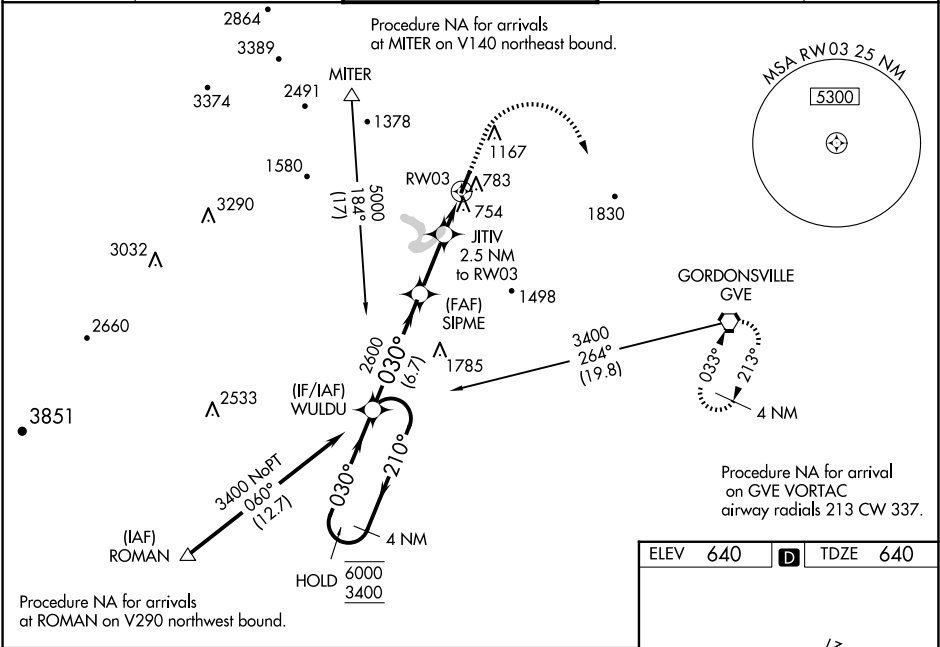
▼ For uncompensated Baro-VNAV systems, LNAV/VNAV NA below -12°C or above 54°C.
▲ When local altimeter setting not received, use Orange altimeter setting and increase LPV DA to 910, LNAV/VNAV DA to 985, and all MDA 80 feet; increase LNAV/VNAV all Cats visibility ½ SM, LNAV Cat C/D visibility ¼ SM and Circling Cats C/D visibility ¼ SM.
Baro-VNAV and VDP NA when using Orange altimeter setting. For Inop ALS, increase LNAV/VNAV all Cats visibility to ¾ SM and LNAV Cats C/D visibility to 1 SM. For Inop ALS when using Orange altimeter setting, increase LPV all Cats visibility to ¾ SM, and LNAV/VNAV all Cats visibility to 1 SM.

MALSR



MISSED APPROACH:
Climb to 2000 then climbing right turn to 4000 direct GVE VORTAC and hold.

ATIS 118.425	POTOMAC APP CON 132.85 323.125	CHARLOTTESVILLE TOWER ★ 124.5 (CTAF) 0 338.275	GND CON 121.9 338.275	UNICOM 122.95
------------------------	--	--	---------------------------------	-------------------------



4 NM Holding Pattern		WULDU		SIPME		JIIV		RW03		
6000 ← 210°		3400 → 030°		2600		2600		2600		
GP 3.00°		TCH 54		*1480		*1480		*1480		
6.7 NM		3.5 NM		1.5 NM		1 NM				
CATEGORY	A	B		C		D				
LPV DA	840-½		200 (200-½)							
LNAV/ VNAV DA	915-½		275 (300-½)							
LNAV MDA	1020-½ 380 (400-½)		1020-⅝ 380 (400-⅝)							
CIRCLING	1100-1 460 (500-1)		1500-2½ 860 (900-2½)		1500-2¾ 860 (900-2¾)					

