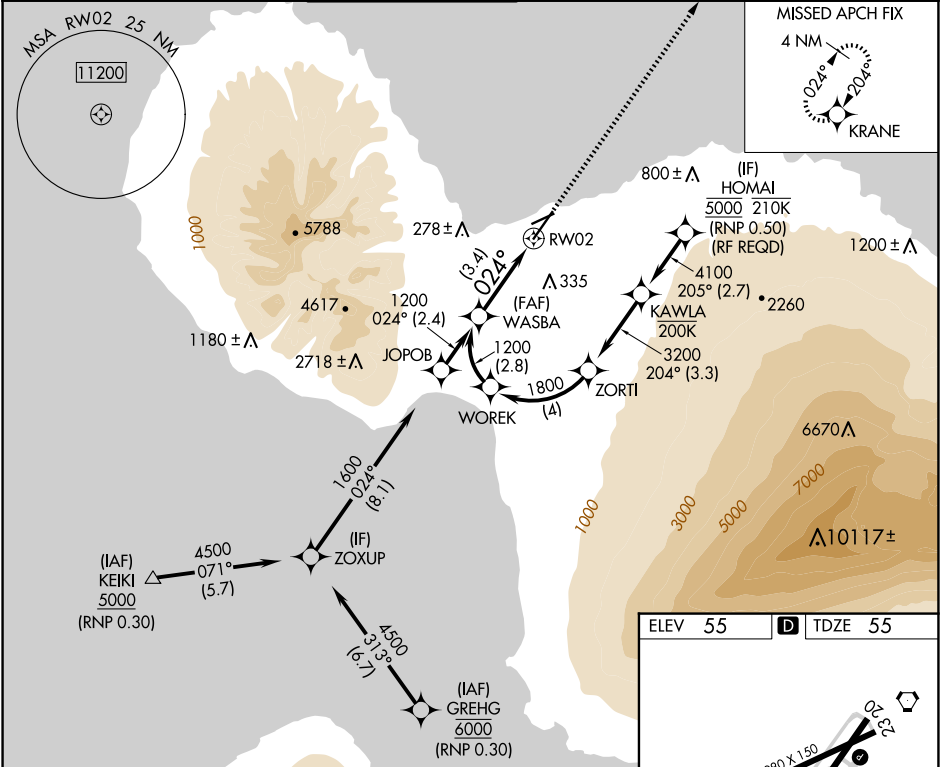



APP CRS	Rwy Idg	6995
024°	TDZE	55
	Apt Elev	55

RNAV (RNP) Z RWY 2
KAHULUI (OGG)(PHOG)

RNP AR APCH - GPS.	MALSR	MISSED APPROACH: Climb to 3000 direct KRANE and hold.
▼ For uncompensated Baro-VNAV systems, procedure NA below 14°C or above 54° C. When local altimeter setting not received, procedure NA. For inop ALS, increase RNP 0.30 all Cats visibility to ½ SM.		

ATIS	HCF APPROACH	MAUI TOWER ★	GND CON	CLNC DEL	UNICOM
128.6	120.2 322.4 (NORTH) 119.5 225.4 (SOUTH)	118.7 (CTAF) 0 279.6	121.9 279.6	120.6 290.5	122.95



WASBA		VGSi and RNAV glidepath not coincident (VGSi Angle 3.00/TCH 77).		3000 ↑		KRANE 			
1200		See planview for multiple IF locations.							
1200		024°		RW02					
GP 3.00° TCH 62		3.4 NM							
CATEGORY		A		B		C		D	
RNP 0.30 DA		394-1/2		339 (400-1/2)					
AUTHORIZATION REQUIRED									

