

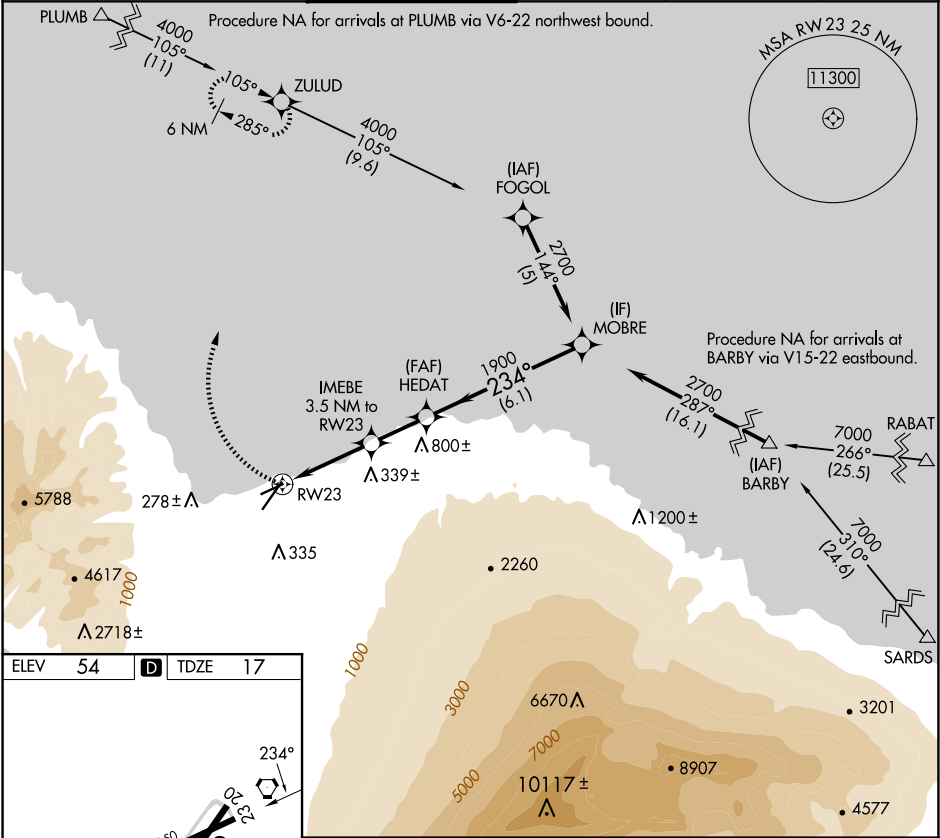
APP CRS	Rwy Idg	4980
234°	TDZE	17
	Apt Elev	54

RNAV (GPS) RWY 23

KAHULUI (OGG)(PHOG)

<div><div>▼</div><div>▲</div></div>	DME/DME RNP-0.3 NA.	MISSED APPROACH: Climbing right turn to 4000 direct ZULUD and hold, continue climb-in-hold to 4000.
-------------------------------------	---------------------	---

ATIS	HCF APPROACH	MAUI TOWER ★	GND CON	CLNC DEL	UNICOM
128.6	120.2 322.4 (NORTH) 119.5 225.4 (SOUTH)	118.7 (CTAF) 0 279.6	121.9 279.6	120.6 290.5	122.95



4000	ZULUD	IMEBE 3.5 NM to RW23	HEDAT	MOBRE	2700
		3.05° TCH 50	1900	234°	Procedure Turn NA
	RW23	3.5 NM	2.2 NM	6.1 NM	
CATEGORY	A	B	C	D	
LNAV MDA	460-1	443 (500-1)	460-1¼ 443 (500-1¼)	460-1½ 443 (500-1½)	
CIRCLING	500-1 446 (500-1)	620-1 566 (600-1)	780-2 726 (800-2)	1180-3 1126 (1200-3)	