

APP CRS
204°

Rwy Idg
TDZE
25

Apt Elev
53

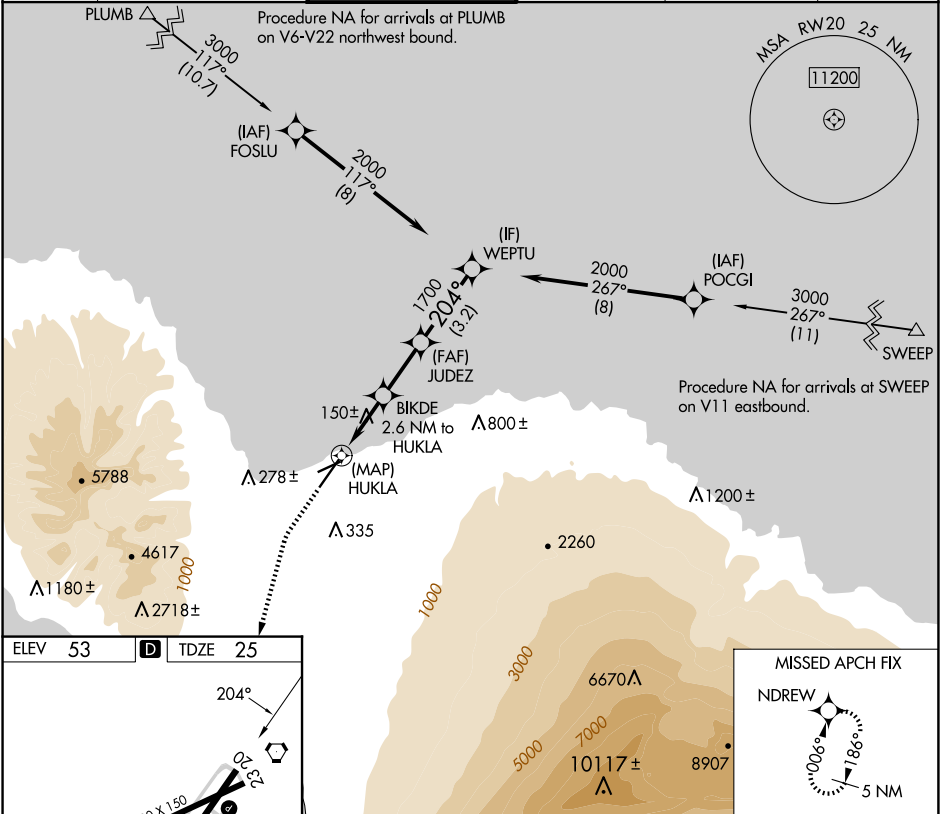
RNAV (GPS) RWY 20
KAHULUI (OGG)(PHOG)

RNP APCH.

When local altimeter setting not received, procedure NA.

MISSED APPROACH: Climb to 500 then climbing left turn to 4300 direct NDREW and hold.

ATIS 128.6	HCF APPROACH 120.2 322.4 (NORTH) 119.5 225.4 (SOUTH)	MAUI TOWER★ 118.7 (CTAF) 0 279.6	GND CON 121.9 279.6	CLNC DEL 120.6 290.5	UNICOM 122.95
---------------	--	-------------------------------------	------------------------	-------------------------	------------------



ELEV 53

TDZE 25

204°

4980 X 150

0.6% UP

8990 X 130

TWR 196

AS

H

N

500

4300

NDREW

VGSI and descent angles not coincident (VGSI Angle 3.00/TCH 76).

WEPTU

BIKDE 2.6 NM to HUKLA

JUDEZ

0.8 NM to HUKLA

HUKLA

940

1700

204°

2000

0.2

0.8

1.8 NM

2.3 NM

3.2 NM

CATEGORY	A	B	C	D
LNAV MDA	400-1	375 (400-1)		
CIRCLING	500-1 447 (500-1)	620-1 567 (600-1)	740-2 687 (700-2)	1140-3 1087 (1100-3)

HIRL Rwy 2-20

MIRL Rwy 5-23